

# IZZO EIGHT DEPARTURE (RNAV)

AL-6648 (FAA)

PHOENIX GOODYEAR (GYR)  
GOODYEAR, ARIZONA

SW-4, 31 OCT 2024 to 28 NOV 2024

### TOP ALTITUDE: ASSIGNED BY ATC

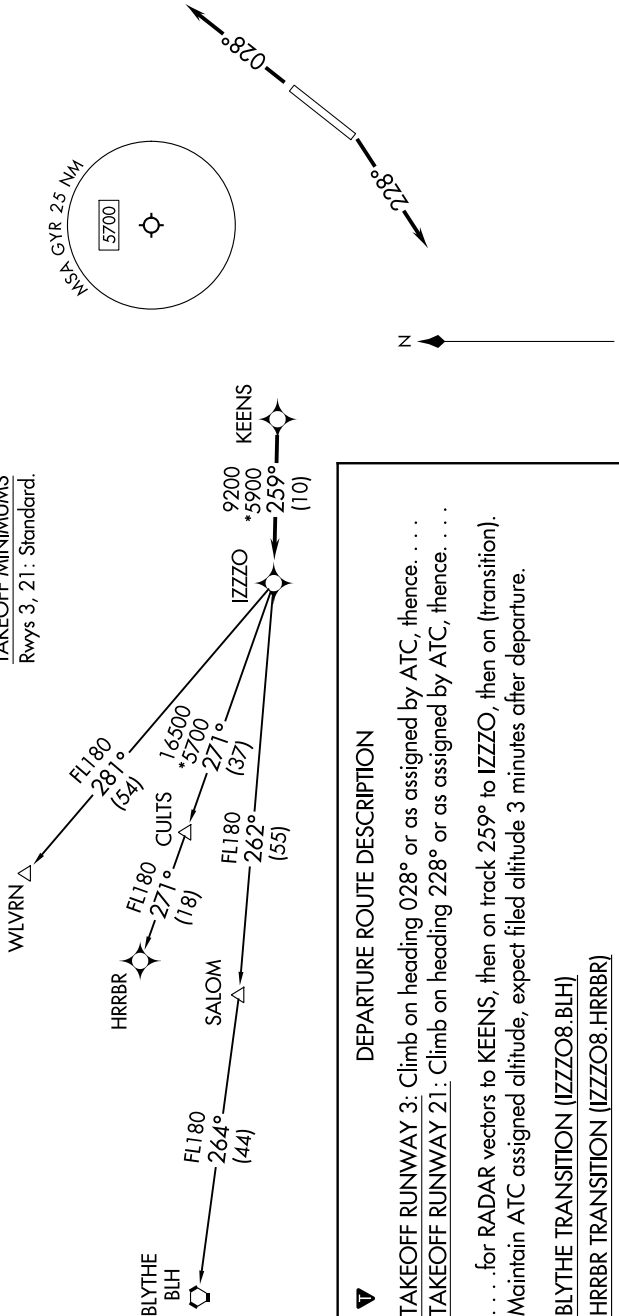
LUKE DEP CON\*  
125.45 263.125  
PHOENIX DEP CON  
120.7 239.0  
ATIS  
118.35  
GND CON  
121.7  
GOODYEAR TOWER\*  
120.1 239.3

RNAV 1 - GPS.

RADAR required.

- NOTE: Turbojets and turboprops only.
- NOTE: Aircraft requesting FL220 and below must file BLYTHE Transition.
- NOTE: Turbojets landing LAX, file WLVRN Transition.
- NOTE: Aircraft landing other than LAX and turboprops landing at LAX: Requesting FL240 and above, file HRRBR Transition.
- NOTE: Aircraft departing KGEU and KGYR ATC assigned only.

TAKEOFF MINIMUMS  
Rwys 3, 21: Standard.



### DEPARTURE ROUTE DESCRIPTION

**TAKEOFF RUNWAY 3:** Climb on heading 028° or as assigned by ATC, thence. . . .  
**TAKEOFF RUNWAY 21:** Climb on heading 228° or as assigned by ATC, thence. . . .  
 . . . for RADAR vectors to KEENS, then on track 259° to IZZO, then on (transition).  
 Maintain ATC assigned altitude, expect filed altitude 3 minutes after departure.

- BLYTHE TRANSITION (IZZO8.BLH)
- HRRBR TRANSITION (IZZO8.HRRBR)
- WLVRN TRANSITION (IZZO8.WLVRN)

NOTE: Chart not to scale.

SW-4, 31 OCT 2024 to 28 NOV 2024