

| | | |
|---------|----------|------|
| APP CRS | Rwy Idg | N/A |
| 254° | TDZE | N/A |
| | Apt Elev | 1478 |

RNAV (GPS)-B

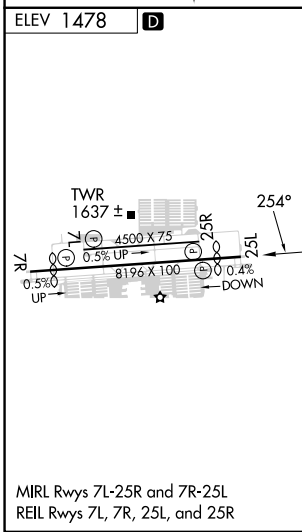
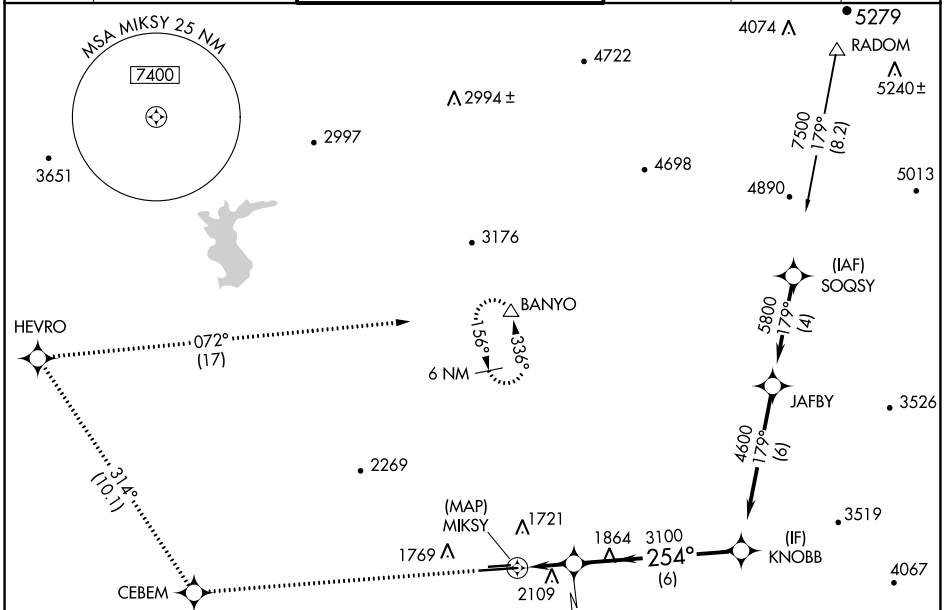
PHOENIX DEER VALLEY (DVT)

RNP APCH - GPS.

⚠ When VGSI inop, Circling to Rwy 25R NA at night. Circling not authorized at night north of Rwy 7R-25L. When local altimeter setting not received, use Scottsdale altimeter setting and increase all MDAs 40 feet and Circling Cat B visibility 1/2 SM.

MISSED APPROACH: Climb to 6000 direct CEBEM and on track 314° to HEVRO and right turn on track 072° to BANYO and hold.

| | | | | | |
|-------|-----------------|---|---------|----------|--------|
| ATIS | PHOENIX APP CON | DEER VALLEY TOWER ★ | GND CON | CLNC DEL | UNICOM |
| 126.5 | 120.7 239.0 | 118.4 (070°-250°) (CTAF) 120.2 (251°-069°) | 121.8 | 123.9 | 122.95 |



| | | | | | | | | | |
|-----------|--------------------------|--------------------------|-------------------------|---------|-------|---------|-------------------|------|-------|
| ELEV 1478 | D | 6000 | CEBEM | tr 314° | HEVRO | tr 072° | BANYO | 4600 | KNOBB |
| | | JERGI | | | MIKSY | | Procedure Turn NA | | |
| | | 2 NM | | 6 NM | | | | | |
| CATEGORY | A | B | C | D | | | | | |
| CIRCLING | 2400-1¼ 922 (1000-1¼) | 2420-1¼ 942 (1000-1¼) | 2580-3 1102 (1200-3) | NA | | | | | |

SW-4, 31 OCT 2024 to 28 NOV 2024

SW-4, 31 OCT 2024 to 28 NOV 2024