

WAAS CH <b>63213</b> <b>W18A</b>	APP CRS <b>183°</b>	Rwy ldg TDZE <b>4550</b> <b>36</b> Apt Elev <b>37</b>
--	------------------------	--

# RNAV (GPS) RWY 18

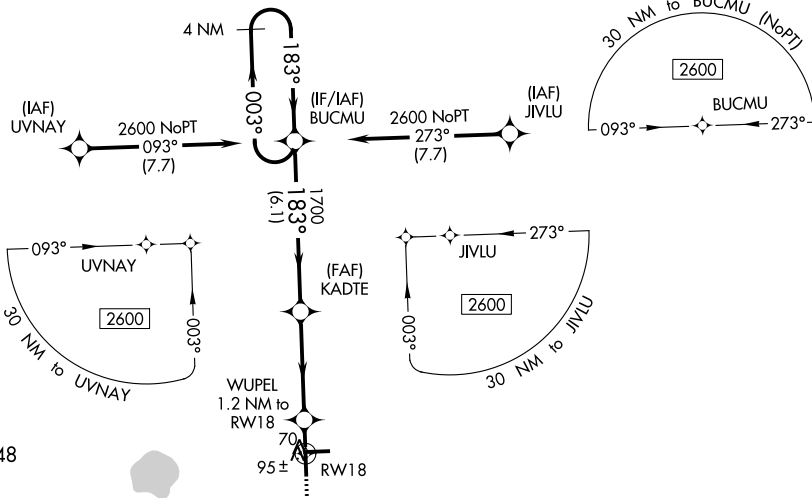
IMMOKALEE RGNL (IMIM)

RNP APCH - GPS.

⚠ For uncompensated Baro-VNAV systems, LNAV/VNAV NA below 0°C or above 54°C.

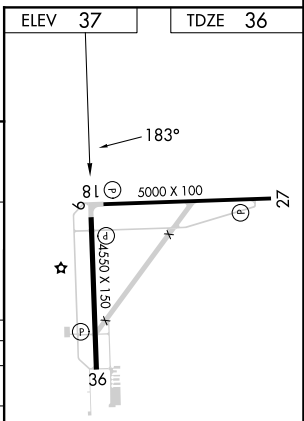
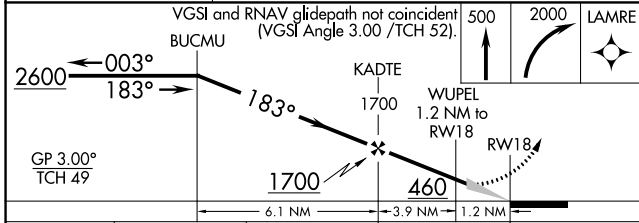
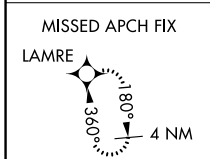
MISSED APPROACH: Climb to 500 then climbing right turn to 2000 direct LAMRE and hold.

AWOS-3 <b>118.525</b>	FORT MYERS APP CON ★ <b>124.125 371.85</b>	CTAF <b>122.9</b>
--------------------------	---	----------------------



SE-3, 31 OCT 2024 to 28 NOV 2024

SE-3, 31 OCT 2024 to 28 NOV 2024



GP 3.00° TCH 49	2600	1700	460	500	2000	LAMRE
CATEGORY	A	B	C	D		
LPV DA		286-1	250 (300-1)			
LNAV/VNAV DA		286-1	250 (300-1)			
LNAV MDA		360-1	324 (400-1)			
CIRCLING	500-1 463 (500-1)	640-1 603 (700-1)	640-1 ¼ 603 (700-1¼)	680-2 643 (700-2)		

REIL Rwy 9, 18, 27, and 36  
MIRL Rwy 9-27 and 18-36