

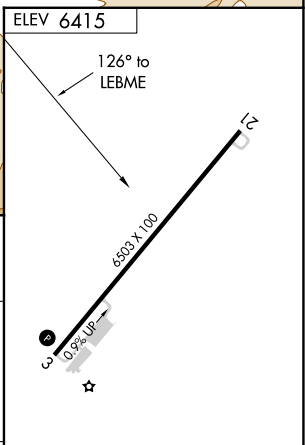
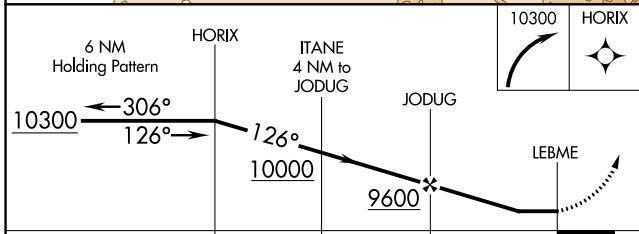
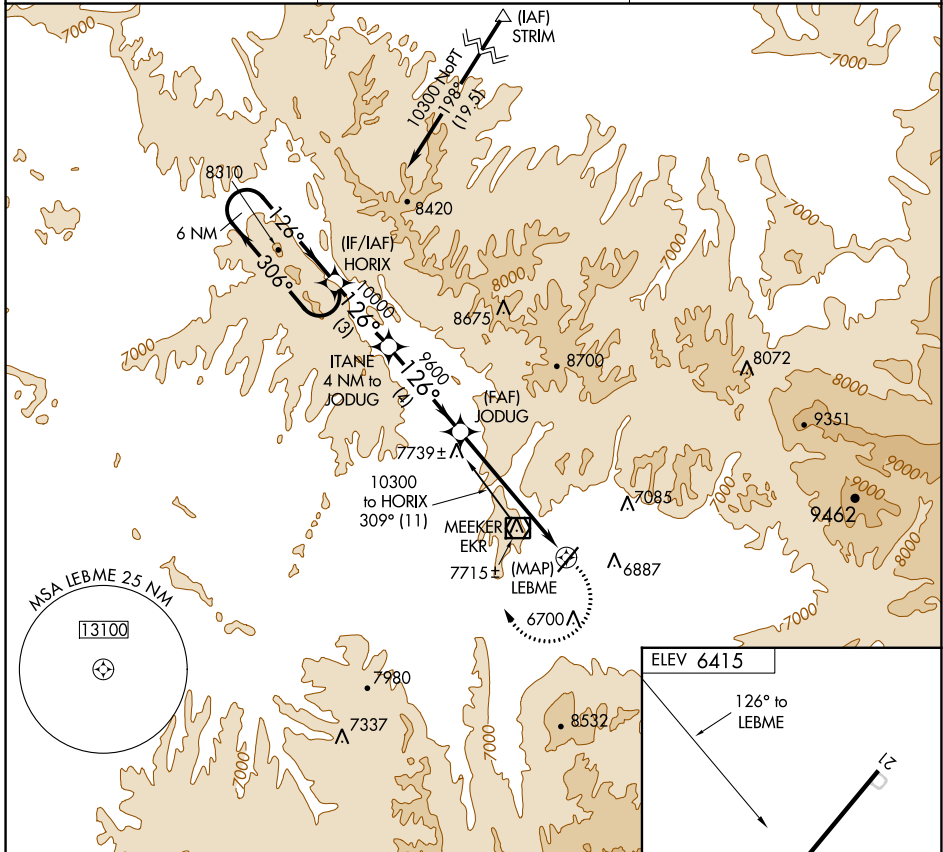
APP CRS	Rwy Idg	N/A
126°	TDZE	N/A
	Apt Elev	6415

RNAV (GPS)-B

MEEKER COULTER FLD (EEO)

	DME/DME RNP-0.3 NA. Circling not authorized west of Rwy 3-21. Night Landing: Rwy 21 NA. Helicopter visibility reduction below 1 SM NA.	MISSED APPROACH: Climbing right turn to 10300 direct HORIX WP and hold.
--	---	---

ASOS 135.525	DENVER CENTER 134.5 327.8	UNICOM 122.8 (CTAF)
------------------------	-------------------------------------	-------------------------------



CATEGORY	A	B	C	D
CIRCLING	7960-1¼ 1545 (1600-1¼)	7960-1½ 1545 (1600-1½)	8440-3 2025 (2100-3)	NA

MIRL Rwy 3-21
REIL Rwy 3 and 21

SW-1, 18 MAY 2023 to 15 JUN 2023

SW-1, 18 MAY 2023 to 15 JUN 2023