

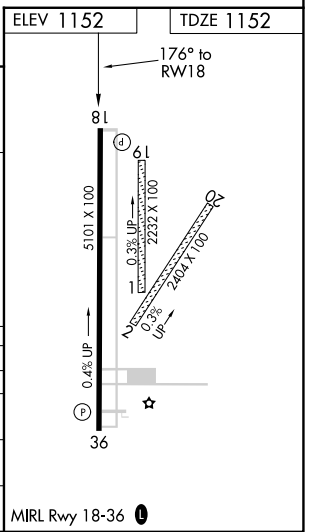
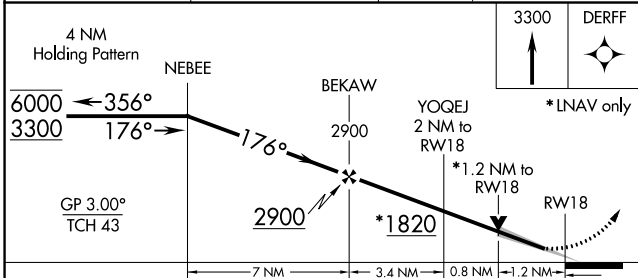
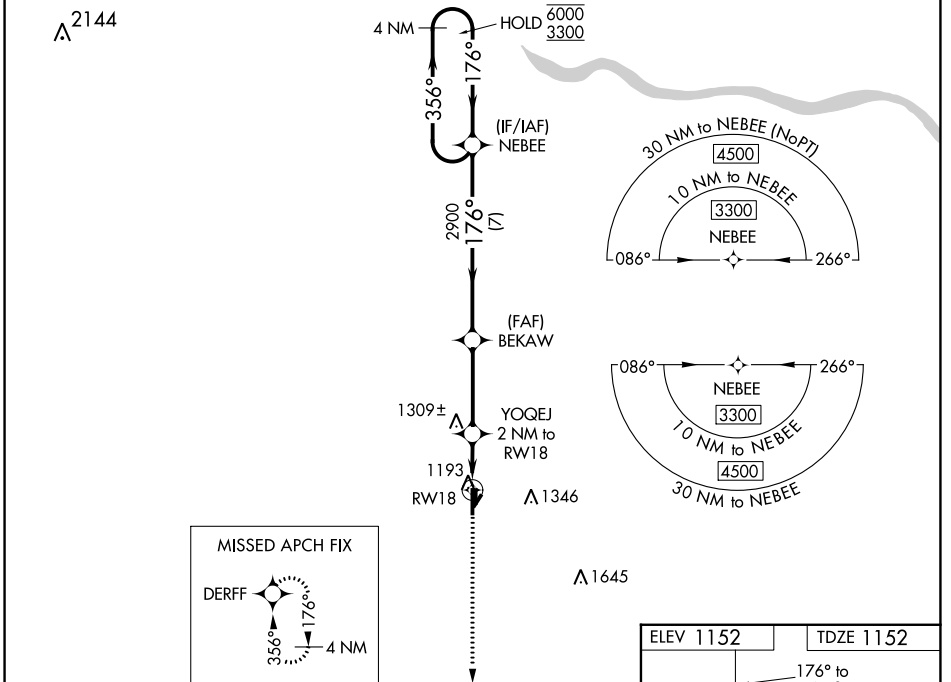
WAAS CH 70430 W18A	APP CRS 176°	Rwy Idg TDZE Apt Elev	5101 1152 1152
--	------------------------	-----------------------------	---

RNAV (GPS) RWY 18

CHICKASHA MUNI (CHK)

RNP APCH.	<p>▼ Circling NA to Rwys 1, 2, 19 and 20. For uncompensated Baro-VNAV systems, LNAV/VNAV NA below -17°C or above 54°C.</p>	<p>MISSED APPROACH: Climb to 3300 direct DERFF and hold.</p>
-----------	---	--

AWOS-3 118.175	OKE CITY APP CON 124.6 266.8	UNICOM 123.0 (CTAF) 0
--------------------------	--	---------------------------------



CATEGORY	A	B	C	D
LPV DA	1352-3/4	200 (200-3/4)		NA
LNAV/VNAV DA	1482-1 1/8	330 (400-1 1/8)		NA
LNAV MDA	1560-1	408 (500-1)	1560-1 1/8 408 (500-1 1/8)	NA
C CIRCLING	1600-1 448 (500-1)	1620-1 468 (500-1)	1700-1 1/2 548 (600-1 1/2)	NA

SC-1, 03 OCT 2024 to 31 OCT 2024

SC-1, 03 OCT 2024 to 31 OCT 2024