

WAAS CH 99540 W36A	APP CRS 360°	Rwy Idg TDZE Apt Elev	3200 968 968
--	------------------------	-----------------------------	---

RNAV (GPS) RWY 36

BUFFALO MUNI (CFE)

▼ For uncompensated Baro-VNAV systems, LNAV/VNAV NA below -16°C (4°F) or above 54°C (130°F). Circling Rwy 18 NA at night. Rwy 36 helicopter visibility reduction below ¾ SM NA. DME/DME RNP-0.3 NA.

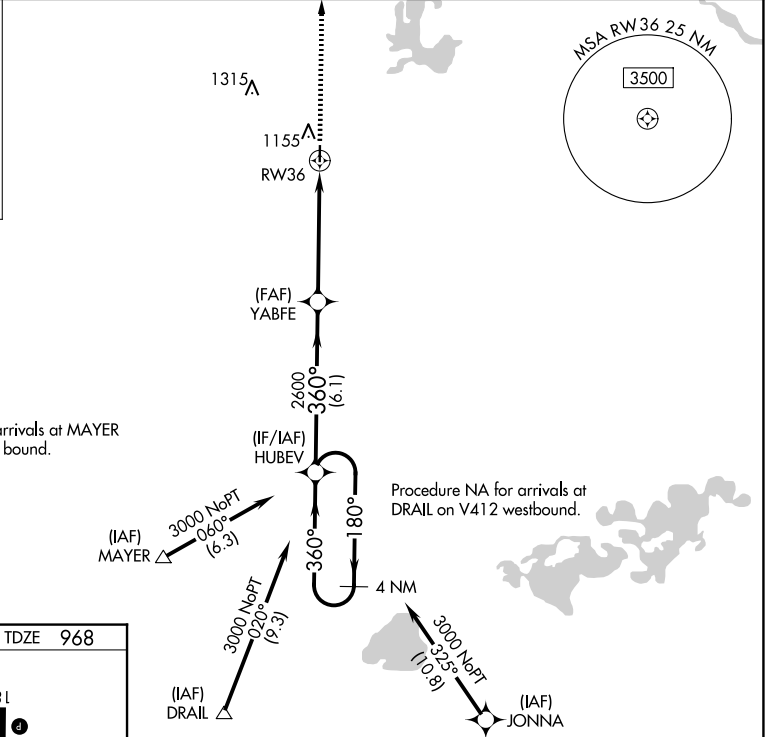
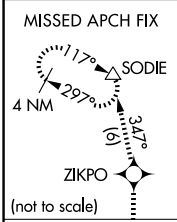
MISSED APPROACH: Climb to 3400 direct ZIKPO and track 347° to SODIE and hold.

AWOS-3PT
120.45

MINNEAPOLIS APP CON
126.5 335.65

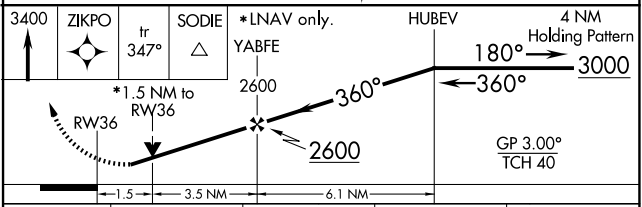
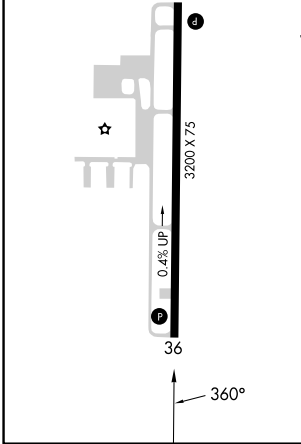
GCO
121.725

UNICOM
122.8 (CTAF) **1**



ELEV 968	TDZE 968
----------	----------

REIL Rwy 18 and 36 **1**
MIRL Rwy 18-36 **1**



CATEGORY	A	B	C	D
LPV DA	1280-1½	312 (400-1½)		NA
LNAV/VNAV DA	1396-1½	428 (500-1½)		NA
LNAV MDA	1460-1	492 (500-1)	1460-1¾ 492 (500-1¾)	NA
C CIRCLING	1460-1	492 (500-1)	1540-1½ 572 (600-1½)	NA

NC-1, 23 JAN 2025 to 20 FEB 2025

NC-1, 23 JAN 2025 to 20 FEB 2025