

WAAS CH <b>53421</b> <b>W26A</b>	APP CRS <b>261°</b>	Rwy Idg TDZE Apt Elev	<b>3000</b> <b>534</b> <b>534</b>
--	------------------------	-----------------------------	---

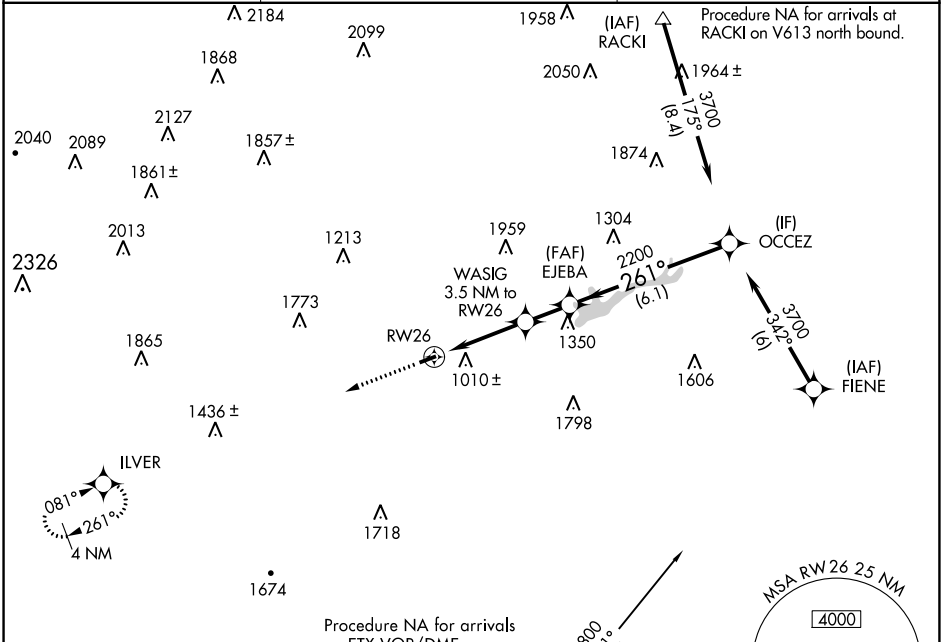
# RNAV (GPS) RWY 26

JAKE ARNER MEML (22N)

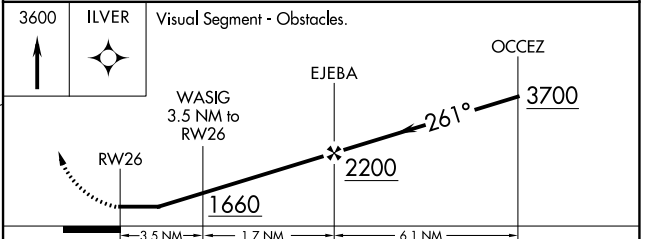
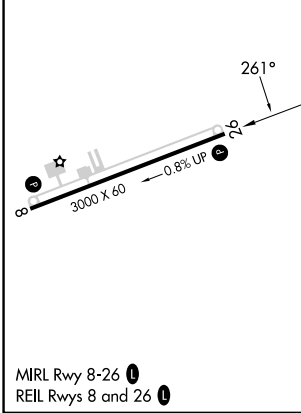
**⚠** DME/DME RNP-0.3 NA. When local altimeter setting not received, use Lehigh Valley Intl altimeter setting and increase all MDA 60 feet and LP and LNAV Cat A visibility ¼ mile. Helicopter visibility reduction below ¾ SM NA.

**MISSED APPROACH:** Climb to 3600 direct ILVER and hold.

AWOS-3PT <b>119.350</b>	ALLENTOWN APP CON <b>119.65 124.45 351.8</b>	UNICOM <b>123.05 (CTAF)</b> <b>📻</b>
----------------------------	---	---



ELEV 534	TDZE 534
----------	----------



CATEGORY	A	B	C	D
LP MDA	1380-1 846 (900-1)	1380-1¼ 846 (900-1¼)		NA
LNAV MDA	1380-1 846 (900-1)	1380-1¼ 846 (900-1¼)		NA
CIRCLING	1500-1¼ 966 (1000-1¼)	1780-1½ 1246 (1300-1½)		NA

NE-4, 31 OCT 2024 to 28 NOV 2024

NE-4, 31 OCT 2024 to 28 NOV 2024