

APP CRS 190°	Rwy Idg TDZE Apt Elev	5201 726 726
------------------------	-----------------------------	---

RNAV (GPS) RWY 19

JAMES A RHODES (JRO)

RNP APCH - GPS.

Procedure NA at night.
Rwy 19 helicopter visibility reduction below 1 SM NA.

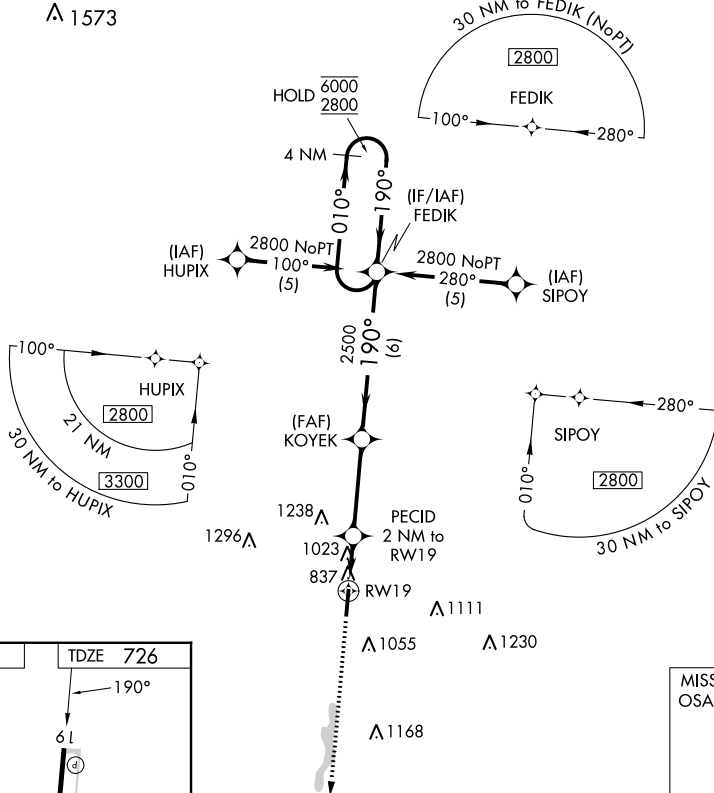
MISSED APPROACH: Climb to 2800 direct OSATE and hold.

AWOS-3PT
118.825

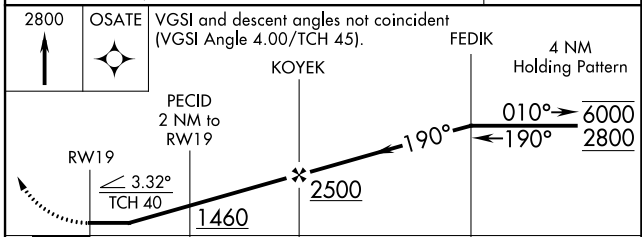
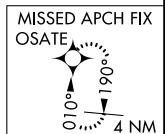
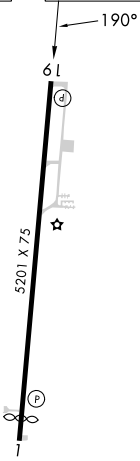
HUNTINGTON APP CON
128.4 270.1

UNICOM
122.7 (CTAF)

▲ 1573



ELEV 726	TDZE 726
----------	----------



CATEGORY	A	B	C	D
LNAV MDA	1280-1	554 (600-1)	1280-1½	554 (600-1½)
CIRCLING	1340-1 614 (700-1)	1480-1 754 (800-1)	1680-3	954 (1000-3)

EC-2, 31 OCT 2024 to 28 NOV 2024

EC-2, 31 OCT 2024 to 28 NOV 2024