

APP CRS **010°**  
 Rwy Idg **4870**  
 TDZE **722**  
 Apt Elev **726**

# RNAV (GPS) RWY 1

JAMES A RHODES (JRO)

RNP APCH - GPS.

**Procedure NA at night. Rwy 1 helicopter visibility reduction below 1 SM NA.**

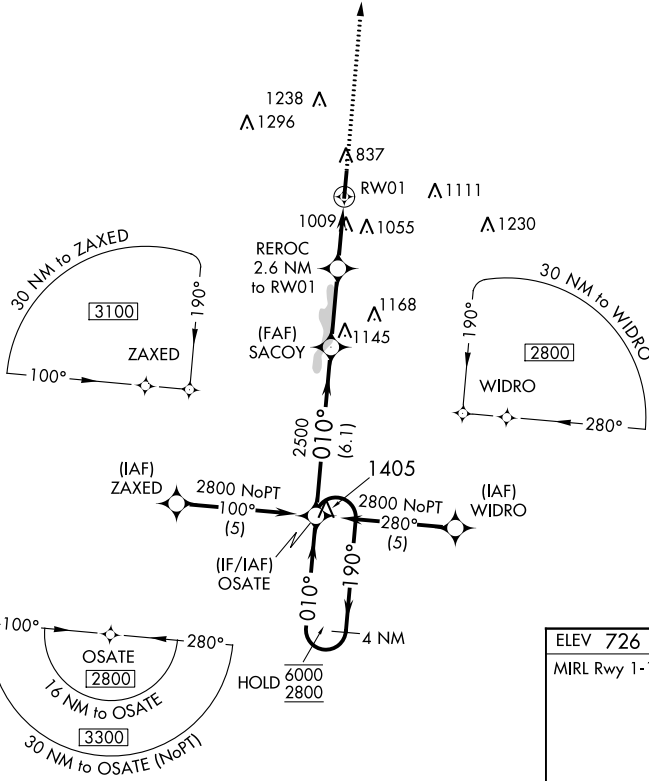
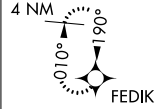
MISSED APPROACH:  
 Climb to 2800 direct  
 FEDIK and hold.

AWOS-3PT  
**118.825**

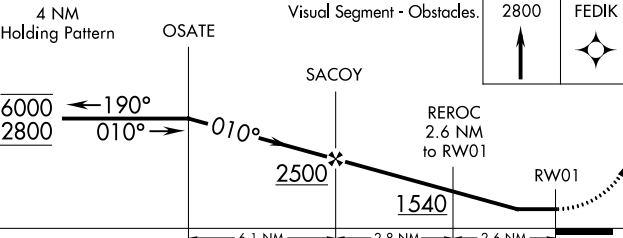
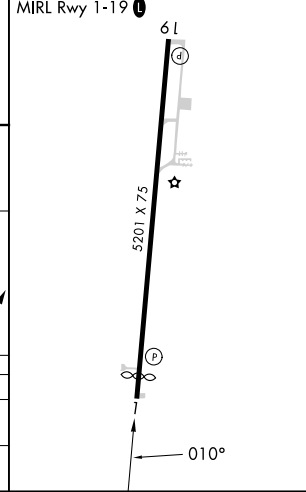
HUNTINGTON APP CON  
**128.4 270.1**

UNICOM  
**122.7(CTAF) 0**

MISSED APCH FIX



ELEV 726 TDZE 722



CATEGORY	A	B	C	D
LNVA MDA	1300-1	578 (600-1)	1300-1½	578 (600-1½)
CIRCLING	1340-1 614 (700-1)	1480-1 754 (800-1)	1680-3	954 (1000-3)

EC-2, 31 OCT 2024 to 28 NOV 2024

EC-2, 31 OCT 2024 to 28 NOV 2024