

WAAS CH <b>81903</b> <b>W27A</b>	APP CRS <b>269°</b>	Rwy Idg <b>5002</b> TDZE <b>67</b> Apt Elev <b>68</b>
--	------------------------	---

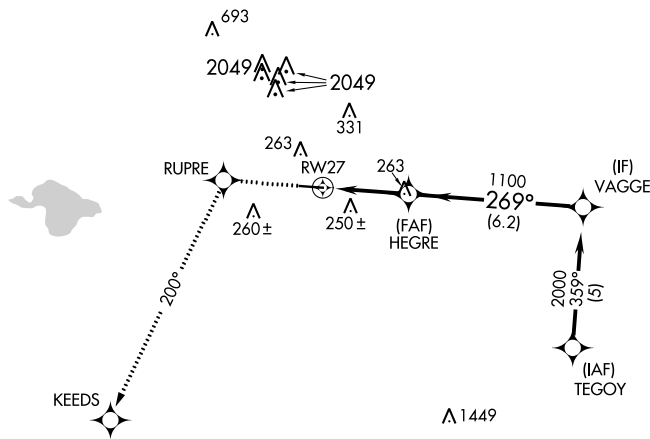
# RNAV (GPS) RWY 27

HOUSTON/SOUTHWEST (A.XH)

RNP APCH.	<p><b>⚠</b> For uncompensated Baro-VNAV systems, LNAV/VNAV NA below -1.5°C (5°F) or above 54°C (130°F). Rwy 27 helicopter visibility reduction below 3/4 SM NA. Obtain local altimeter setting on CTAF; when not received use William P. Hobby altimeter setting and increase all DAs/MDA's 40 feet, and LPV, LNAV Cat C visibility 1/4 mile. Baro-VNAV NA when using William P. Hobby altimeter setting.</p>	<p>MISSED APPROACH: Climb to 2700 direct RUPRE and via 200° track to KEEDS.</p>
-----------	---	---

AWOS-3 <b>123.625</b>	HOUSTON APP CON <b>123.8 257.7</b>	CLNC DEL <b>120.8</b>	UNICOM <b>123.0 (CTAF) 0</b>
--------------------------	---------------------------------------	--------------------------	---------------------------------

## RADAR REQUIRED



ELEV 68	TDZE 67
---------	---------

	2700	RUPRE	tr 200°	KEEDS	VAGGE
	<p>HEGRE</p> <p>2000</p> <p>1100</p> <p>269°</p> <p>RW27</p> <p>3.1 NM</p> <p>6.2 NM</p> <p>GP 3.00° TCH 45</p>				
CATEGORY	A	B	C	D	
LPV DA	367-1 300 (300-1)			NA	
LNAV/VNAV DA	604-2 537 (600-2)			NA	
LNAV MDA	560-1	493 (500-1)	560-1 1/4 493 (500-1 1/4)	NA	

REIL Rwy 9 and 27 **0**  
MIRL Rwy 9-27 **0**