

(LFK3.LFK) 24137

AL-6575 (FAA)

HOUSTON/SOUTHWEST (A.XH)

LUFKIN THREE DEPARTURE

HOUSTON, TEXAS

AWOS-3
 123.625
 CLNC DEL
 120.8
 CTAF
 123.0
 HOUSTON DEP CON
 123.8 257.7

**TOP ALTITUDE:
 ASSIGNED BY ATC**

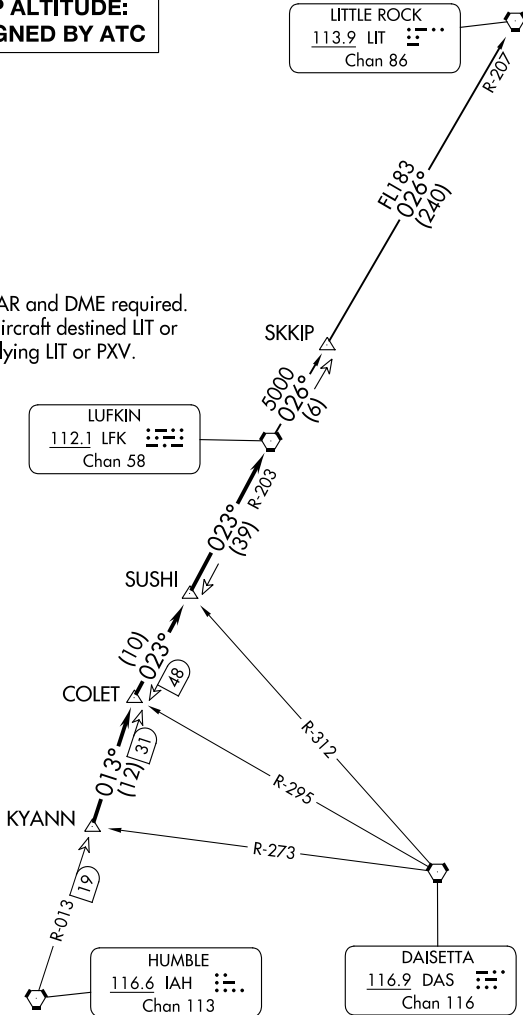
LITTLE ROCK
 113.9 LIT
 Chan 86

NOTE: RADAR and DME required.
 NOTE: For aircraft destined LIT or
 overflying LIT or PXV.

LUFKIN
 112.1 LFK
 Chan 58

DAISETTA
 116.9 DAS
 Chan 116

HUMBLE
 116.6 IAH
 Chan 113



TAKEOFF MINIMUMS
 Rwy 9, 27: Standard.

SC-5, 03 OCT 2024 to 31 OCT 2024

SC-5, 03 OCT 2024 to 31 OCT 2024

NOTE: Chart not to scale.

(CONTINUED ON FOLLOWING PAGE)

LUFKIN THREE DEPARTURE

(LFK3.LFK) 07OCT21

HOUSTON, TEXAS

HOUSTON/SOUTHWEST (A.XH)