

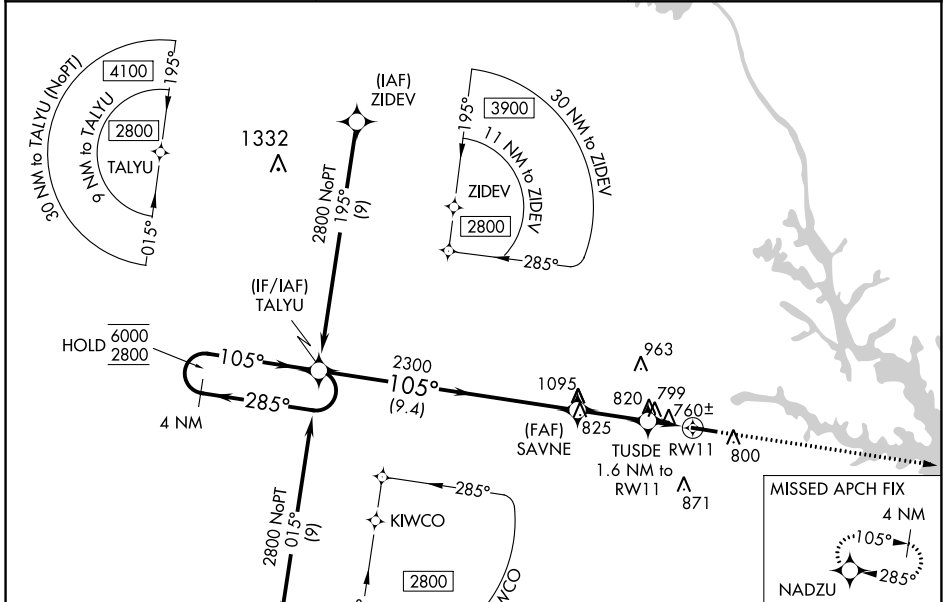
WAAS CH 56346 W11A	APP CRS 105°	Rwy Idg 5004
		TDZE 615
		Apt Elev 615

RNAV (GPS) RWY 11

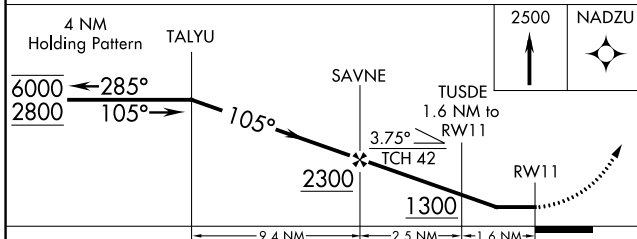
ELBERT COUNTY-PATZ FLD (EBA)

RNP APCH - GPS.	MISSED APPROACH: Climb to 2500 direct NADZU and hold.
<p>Procedure NA at night. Rwy 11 helicopter visibility reduction below 1 SM NA.</p>	

AWOS-3 118.15	ATLANTA CENTER 127.5 316.05	UNICOM 122.8 (CTAF)
-------------------------	---------------------------------------	-------------------------------



ELEV 615	TDZE 615
----------	----------



2500	NADZU
MIRL Rwy 11-29	

CATEGORY	A	B	C	D
LP MDA	1060-1	445 (500-1)	1060-1 $\frac{3}{8}$ 445 (500-1 $\frac{3}{8}$)	NA
LNAV MDA	1120-1	505 (600-1)	1120-1 $\frac{3}{8}$ 505 (600-1 $\frac{3}{8}$)	NA
CIRCLING	1160-1	545 (600-1)	1280-1 $\frac{3}{4}$ 665 (700-1 $\frac{3}{4}$)	NA

SE-4, 31 OCT 2024 to 28 NOV 2024

SE-4, 31 OCT 2024 to 28 NOV 2024