

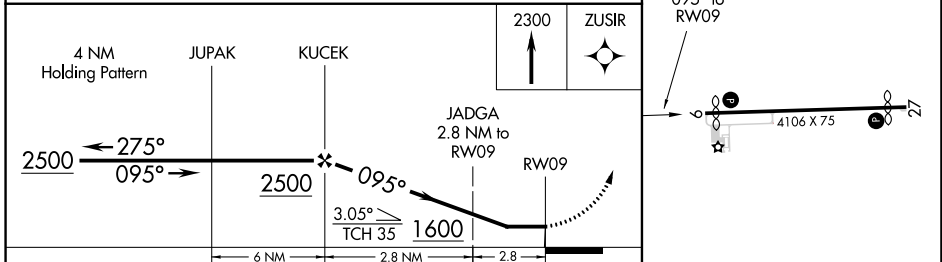
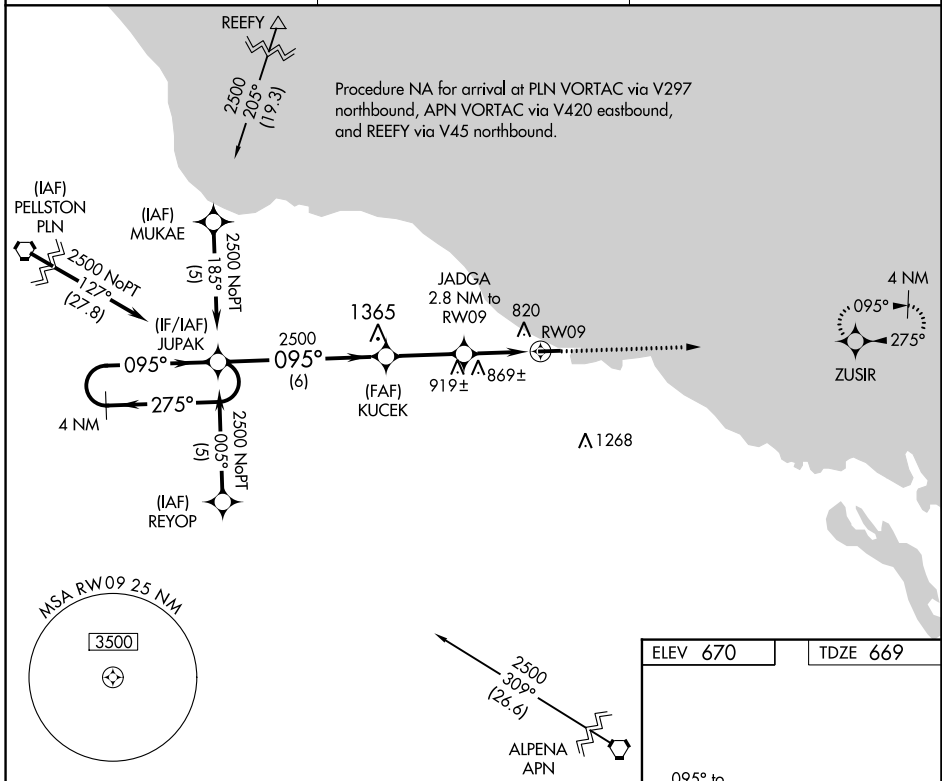
APP CRS <b>095°</b>	Rwy Idg TDZE Apt Elev	<b>3886</b> <b>669</b> <b>670</b>
------------------------	-----------------------------	---

# RNAV (GPS) RWY 9

PRESQUE ISLE COUNTY (PZQ)

RNP APCH.	<p>▼ If local altimeter setting not received, use Alpena County Rgnl altimeter setting and increase all MDAs 60 feet. Straight-in/Circling Rwy 9 NA at night. Rwy 9 helicopter visibility reduction below 1 SM NA.</p> <p>▲ NA</p>	MISSED APPROACH: Climb to 2300 direct ZUSIR and hold.
-----------	--	---

AWOS-3 <b>118.125</b>	ALPENA APP CON * <b>128.425 379.3</b>	CTAF <b>122.9</b>
--------------------------	--	----------------------



CATEGORY	A	B	C	D
LNAV MDA	1120-1	451 (500-1)	1120-1¼ 451 (500-1¼)	NA
CIRCLING	1200-1 530 (600-1)	1240-1 570 (600-1)	1260-1½ 590 (600-1½)	NA

ELEV 670	TDZE 669
----------	----------

REIL Rwy 9 and 27 **0**  
MRL Rwy 9-27 **0**

EC-1, 31 OCT 2024 to 28 NOV 2024

EC-1, 31 OCT 2024 to 28 NOV 2024