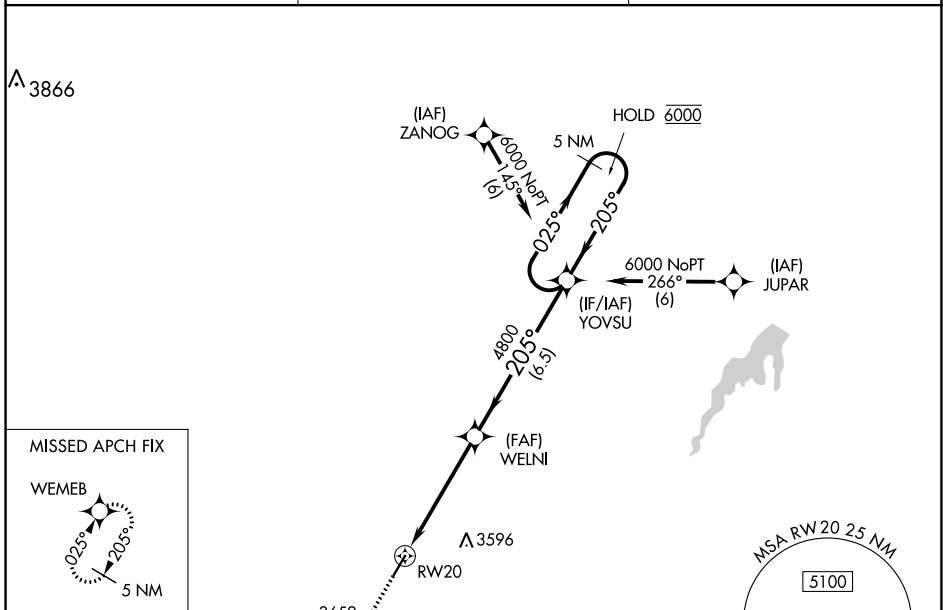


WAAS CH <b>42826</b> <b>W20A</b>	APP CRS <b>205°</b>	Rwy Idg TDZE Apt Elev	<b>4698</b> <b>3196</b> <b>3205</b>
--	------------------------	-----------------------------	---

# RNAV (GPS) RWY 20

GRUVER MUNI (E19)

RNP APCH - GPS.		MISSED APPROACH: Climb to 6000 direct WEMEB and hold.
▼ ▲ NA	Procedure NA at night. Rwy 20 helicopter visibility reduction below 1 SM NA. Use Guymon altimeter setting, when not received, use Borger altimeter setting and increase all MDA's 40 feet.	
GUY ASOS <b>119.925</b>	ALBUQUERQUE CENTER <b>127.85 285.475</b>	CTAF <b>122.9</b>



ELEV 3205	TDZE 3196	A 3652	
<p>205° to RW20</p> <p>4698 x 60</p> <p>0.4% UP</p> <p>MIRL Rwy 2-20</p>		<p>6000 WEMEB</p> <p>↑</p>	<p>YOVSU 5 NM Holding Pattern</p> <p>025° → 6000</p> <p>← 205°</p>
<p>RW20</p> <p>4800</p> <p>3.00 TCH 40</p> <p>4.9 NM</p> <p>6.5 NM</p>		<p>WELNI</p> <p>205°</p>	
CATEGORY	A	B	C D
LP MDA	3720-1	524 (600-1)	NA
LNAV MDA	3720-1	524 (600-1)	NA
CIRCLING	3720-1 515 (600-1)	3740-1 535 (600-1)	NA

SC-2, 31 OCT 2024 to 28 NOV 2024

SC-2, 31 OCT 2024 to 28 NOV 2024