

WAAS CH 70333 W15A	APP CRS 158°	Rwy ldg TDZE Apt Elev	4500 1391 1394
--	------------------------	-----------------------------	---

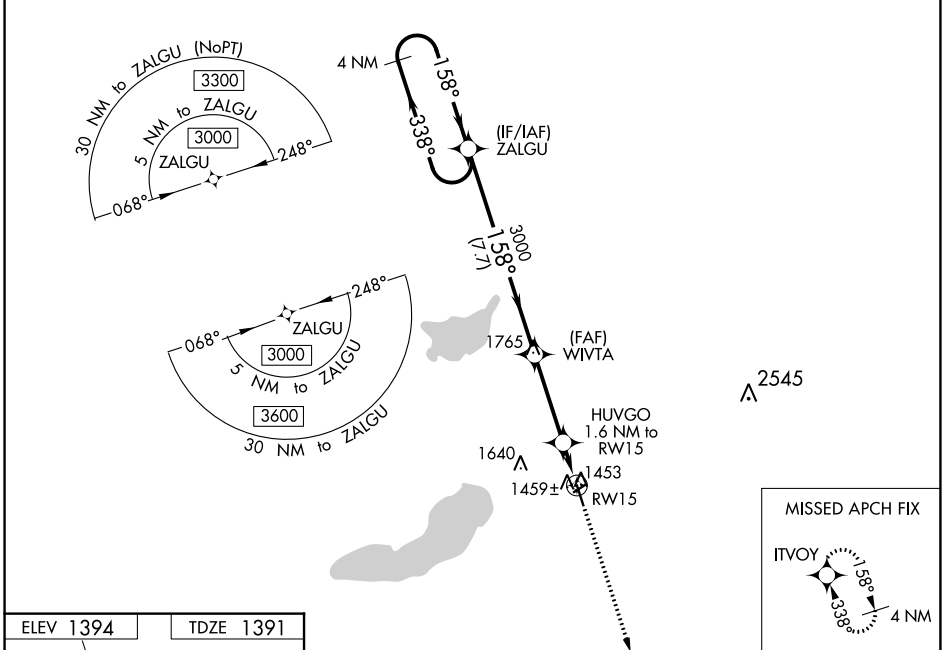
RNAV (GPS) RWY 15

GLENWOOD MUNI (GHW)

⚠ For uncorrected Baro-VNAV systems, LNAV/VNAV NA below -17°C (-2°F) or above 54°C (130°F). DME/DME RNP-0.3 NA. Helicopter visibility reduction below 1 SM NA. When local altimeter setting not received, use Alexandria altimeter setting and increase DA 36 feet and all MDA 40 feet. Baro-VNAV and VDP NA when using Alexandria altimeter setting. Circling NA to Rwy's 5/23.

MISSED APPROACH:
Climb to 3000 direct ITVOY and hold.

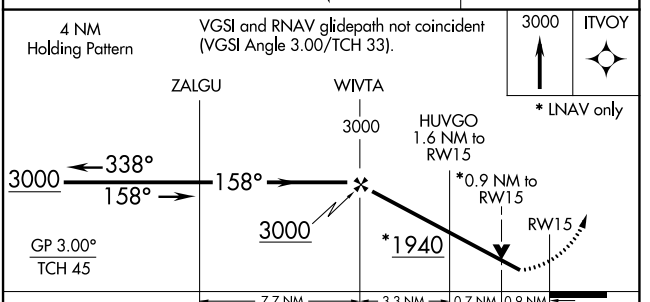
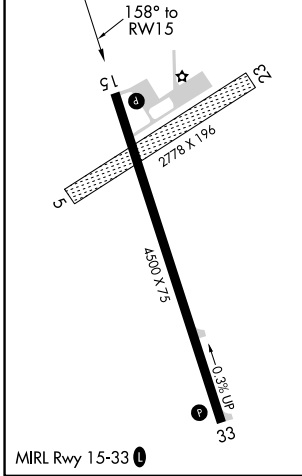
AWOS-3 118.925	MINNEAPOLIS CENTER 126.1 269.2	GCO 121.725	CTAF 122.9 0
--------------------------	--	-----------------------	------------------------



NC-1, 08 AUG 2024 to 05 SEP 2024

NC-1, 08 AUG 2024 to 05 SEP 2024

ELEV 1394	TDZE 1391
-----------	-----------



CATEGORY	A	B	C	D
LPV DA	1641-1	250 (300-1)		NA
LNAV/ DA VNAV	1641-1	250 (300-1)		NA
LNAV MDA	1720-1	329 (400-1)		NA
CIRCLING	1840-1 446 (500-1)	1860-1 466 (500-1)	1940-1½ 546 (600-1½)	NA