

| | | | |
|---------------------------------|------------------------|-----------------------------|---|
| WAAS CH 63107 W17A | APP CRS 175° | Rwy Idg TDZE Apt Elev | 4201 1500 1500 |
|---------------------------------|------------------------|-----------------------------|---|

RNAV (GPS) RWY 17

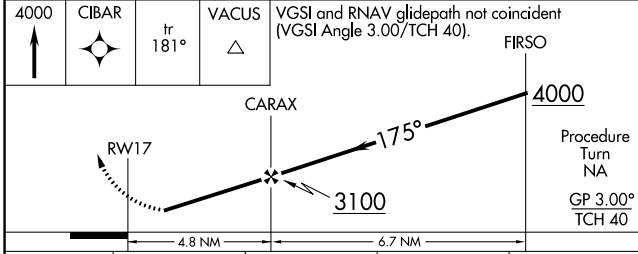
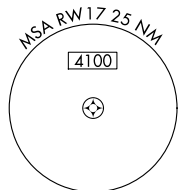
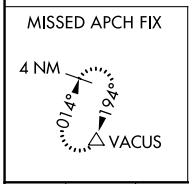
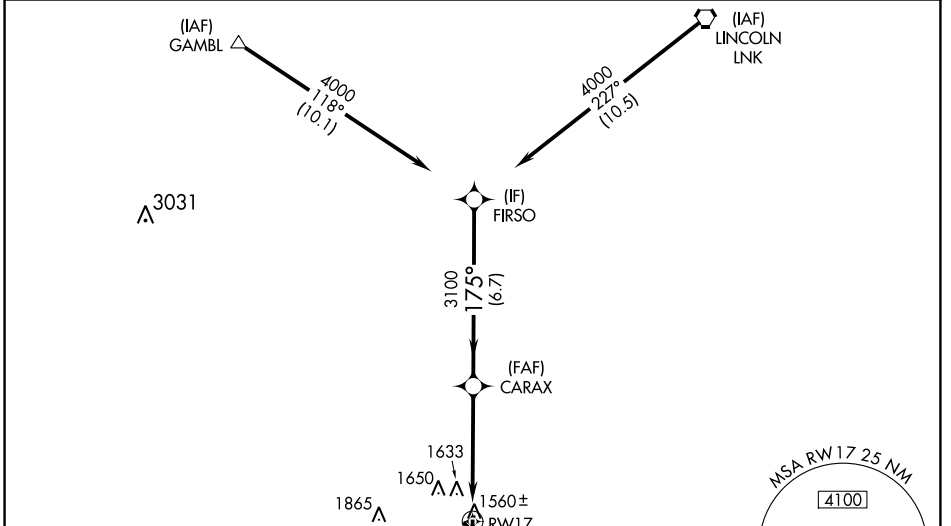
CRETE MUNI (CEK)

NA Baro-VNAV NA. DME/DME RNP-0.3 NA. Visibility reduction by helicopters NA. Use Lincoln altimeter setting; when not received, use Beatrice altimeter setting.

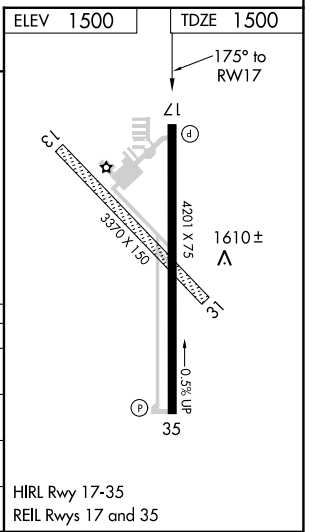
MISSED APPROACH: Climb to 4000 direct CIBAR and via 181° track to VACUS and hold, continue climb-in-hold to 4000.

OMAHA APP CON **124.0 270.3**

UNICOM **122.8** (CTAF)



| CATEGORY | A | B | C | D |
|--------------|---------|--------------|---|----|
| LPV DA | 1875-1¼ | 375 (400-1¼) | | NA |
| LNAV/VNAV DA | 2051-2 | 551 (600-2) | | NA |
| LNAV MDA | 2080-1 | 580 (600-1) | | NA |
| CIRCLING | 2140-1 | 640 (700-1) | | NA |



NC-2, 08 AUG 2024 to 05 SEP 2024

NC-2, 08 AUG 2024 to 05 SEP 2024