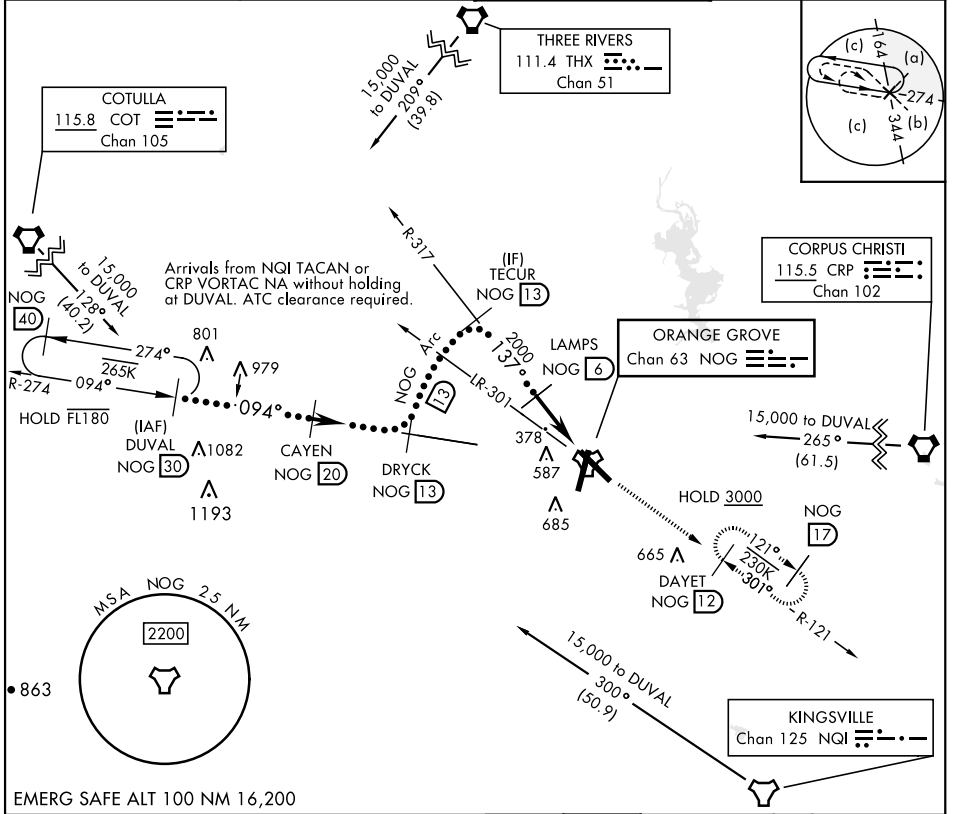


# HI-TACAN Y RWY 13

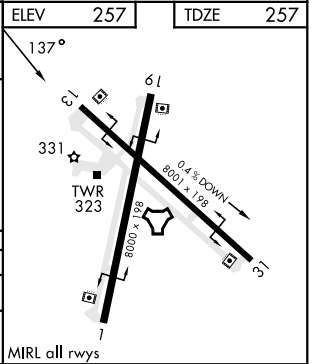
TACAN Chan <b>63</b>	APCH CRS <b>137°</b>	Rwy Ldg TDZE Arpt Elev <b>8001</b> <b>257</b> <b>257</b>	[USN]	ORANGE GROVE NALF (KNOG)
-------------------------	-------------------------	---	-------	--------------------------

**MISSED APPROACH:** Climb to 700, then climb to 3000 intercept NOG TACAN R-121 to DAYET and hold.

ATIS ★ <b>254.35</b>	KINGSVILLE APP CON <b>119.90 290.45</b>	TOWER ★ <b>128.4 281.425</b>	GND CON <b>229.4</b>
-------------------------	--	---------------------------------	-------------------------



	DUVAL NOG 30	CAYEN NOG 20	DRYCK NOG 13	TECUR NOG 13	LAMPS NOG 6	NOG 1.8	NOG TACAN	ELEV 257	TDZE 257
	* 15,000								
	* Or as assigned								
CATEGORY	C		D		E				
S-13	640-1 1/8		383		(400-1 1/8)				
CIRCLING	920-1 1/4 663 (700-1 1/4)		1000-2 1/2 743 (800-2 1/2)		1000-2 3/4 743 (800-2 3/4)				



# HI-TACAN Y RWY 13

SC-3, 31 OCT 2024 to 28 NOV 2024

SC-3, 31 OCT 2024 to 28 NOV 2024