

(SNIDR1.SNIDR) 24025

# SNIDR ONE DEPARTURE (RNAV)

AL-6552 (FAA)

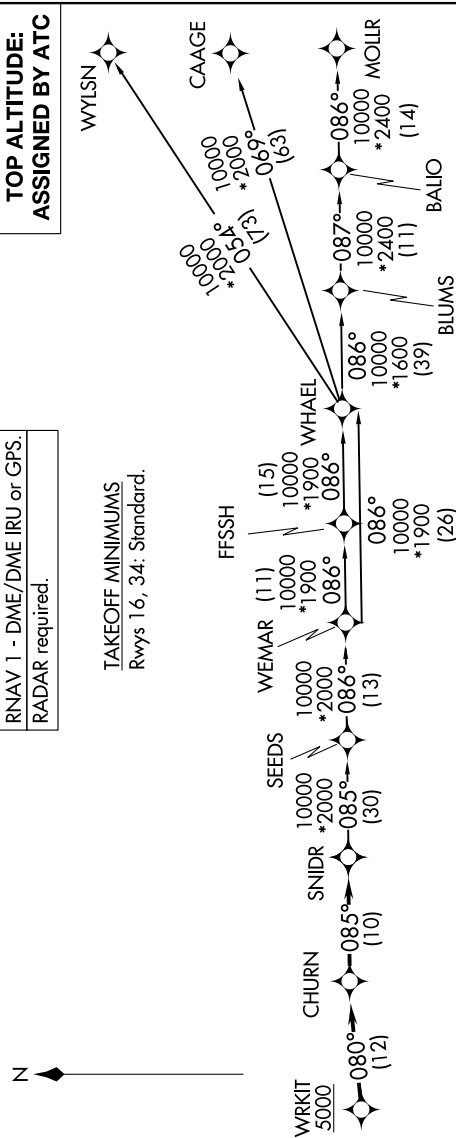
CASTROVILLE MUNI (CVB)  
CASTROVILLE, TEXAS

SC-3, 03 OCT 2024 to 31 OCT 2024

SAN ANTONIO DEP CON  
118.05 353.5

RNAV 1 - DME/DME IRU or GPS.  
RADAR required.

TOP ALTITUDE:  
ASSIGNED BY ATC

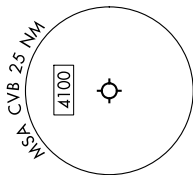
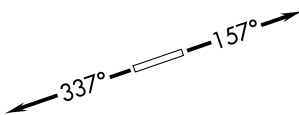


## DEPARTURE ROUTE DESCRIPTION

**TAKEOFF RUNWAY 16:** Climb on heading 157° or as assigned by ATC, for vectors to WRKIT, thence . . . .  
**TAKEOFF RUNWAY 34:** Climb on heading 337° or as assigned by ATC, for vectors to WRKIT, thence . . . .

. . . . on track 080° to CHURN, then on track 085° to SNIDR, then on transition.  
 Maintain ATC assigned altitude.

- BLUMS TRANSITION (SNIDR1.BLUMS)
- CAAGE TRANSITION (SNIDR1.CAAGE)
- FFSSH TRANSITION (SNIDR1.FFSSH)
- MOLLR TRANSITION (SNIDR1.MOLLR)
- SEEDS TRANSITION (SNIDR1.SEEDS)
- WEMAR TRANSITION (SNIDR1.WEMAR)
- WHAEL TRANSITION (SNIDR1.WHAEL)
- WYLSN TRANSITION (SNIDR1.WYLSN)



Note: Chart not to scale.

# SNIDR ONE DEPARTURE (RNAV)

(SNIDR1.SNIDR) 25JAN24

CASTROVILLE, TEXAS  
CASTROVILLE MUNI (CVB)

SC-3, 03 OCT 2024 to 31 OCT 2024