

WAAS CH <b>90524</b> <b>W13A</b>	APP CRS <b>125°</b>	Rwy Idg <b>4000</b> TDZE <b>264</b> Apt Elev <b>264</b>
--	------------------------	---

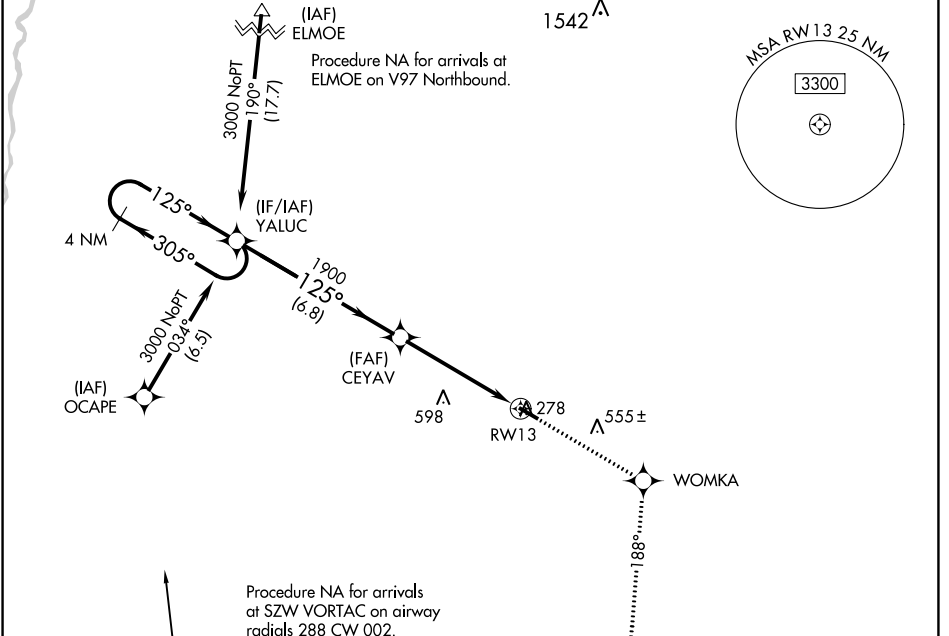
# RNAV (GPS) RWY 13

CAIRO-GRADY COUNTY (70J)

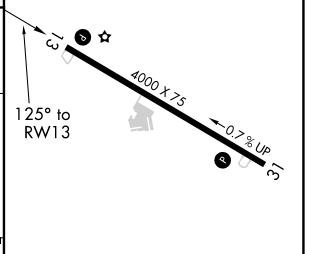
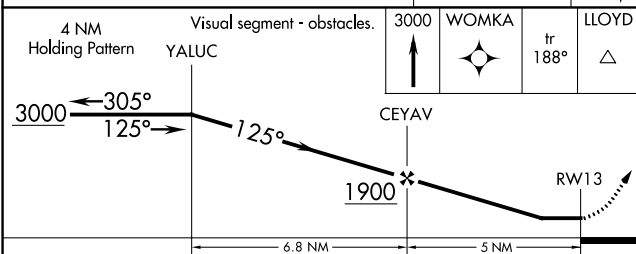
**▽** DME/DME RNP-0.3 NA. Helicopter visibility reduction below 1 SM NA. Use Moultrie altimeter setting, when not received, use Tallahassee Intl altimeter setting and increase all MDA 60 feet; increase LP and LNAV Cats C/D visibility 1/8 SM and increase Circling Cats C/D visibility 1/4 SM. Night landing: Rwy 13 NA.

**▲ NA** MISSED APPROACH: Climb to 3000 direct WOMKA and on track 188° to LLOYD and hold.

TALLAHASSEE APP CON* <b>128.7 254.3</b>	UNICOM <b>122.7 (CTAF)</b>
--	-------------------------------



ELEV 264	TDZE 264
----------	----------



CATEGORY	A	B	C	D
LP MDA	860-1	596 (600-1)	860-1 <sup>3</sup> / <sub>4</sub>	596 (600-1 <sup>3</sup> / <sub>4</sub> )
LNAV MDA	860-1	596 (600-1)	860-1 <sup>3</sup> / <sub>4</sub>	596 (600-1 <sup>3</sup> / <sub>4</sub> )
CIRCLING	860-1	596 (600-1)	1020-2 <sup>1</sup> / <sub>4</sub> 756 (800-2 <sup>1</sup> / <sub>4</sub> )	1020-2 <sup>1</sup> / <sub>2</sub> 756 (800-2 <sup>1</sup> / <sub>2</sub> )

MIRL Rwy 13-31

SE-4, 03 OCT 2024 to 31 OCT 2024

SE-4, 03 OCT 2024 to 31 OCT 2024