

| | | |
|-----------------------|------------------------|------------------------|
| NDB CYR 338 | APP CRS 137° | Rwy Idg 4000 |
| | | TDZE 264 |
| | | Apt Elev 264 |

NDB RWY 13

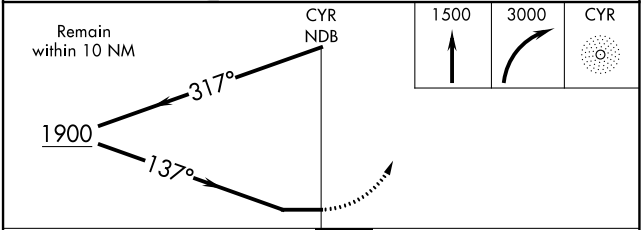
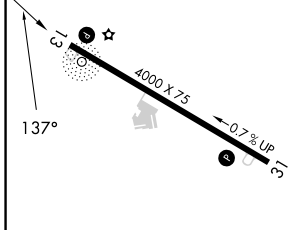
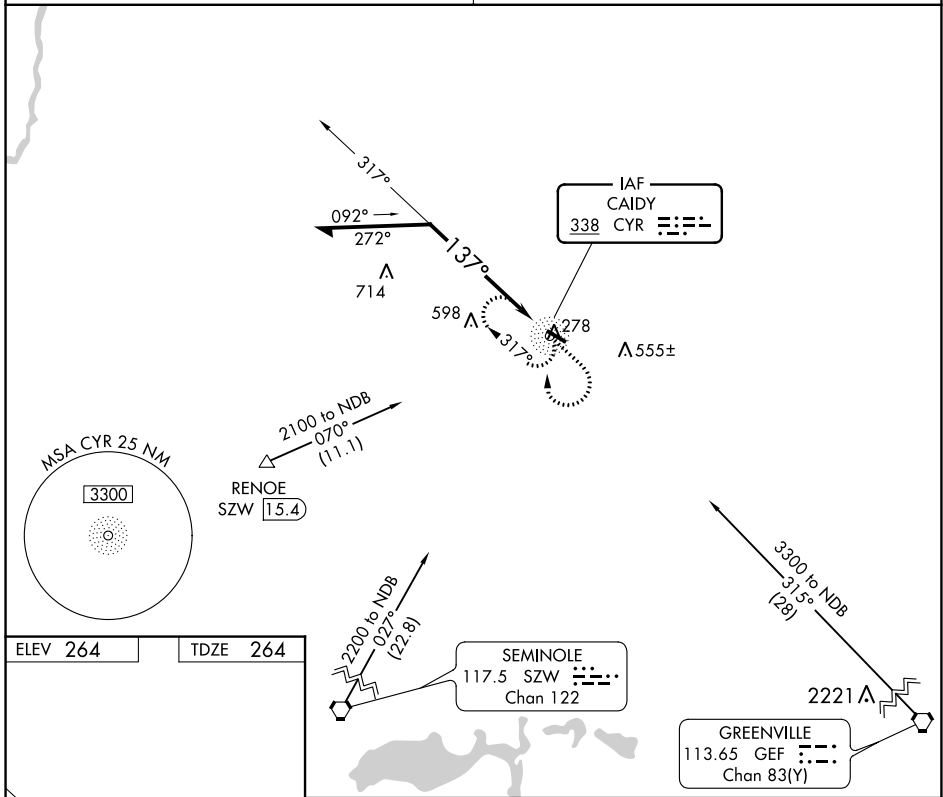
CAIRO-GRADY COUNTY (70J)

⚠ Visibility reduction by helicopters NA. Use Moultrie altimeter setting, when not received use Tallahassee Intl altimeter setting and increase all MDAs 60 feet and Circling Cat A and D visibility ¼ mile. Straight-in/Circling to Rwy 13 NA at night.

MISSED APPROACH: Climb to 1500 then climbing right turn to 3000 direct CYR NDB and hold, continue climb-in-hold to 3000.

TALLAHASSEE APP CON*
128.7 254.3

UNICOM
122.7 (CTAF) 0



| CATEGORY | A | B | C | D |
|----------|-----------------------|-------------------------|---------|--------------|
| S-13 | 1040-1 776 (800-1) | 1040-1¼ 776 (800-1¼) | 1040-2½ | 776 (800-2½) |
| CIRCLING | 1040-1 776 (800-1) | 1040-1¼ 776 (800-1¼) | 1040-2½ | 776 (800-2½) |

SE-4, 03 OCT 2024 to 31 OCT 2024

SE-4, 03 OCT 2024 to 31 OCT 2024