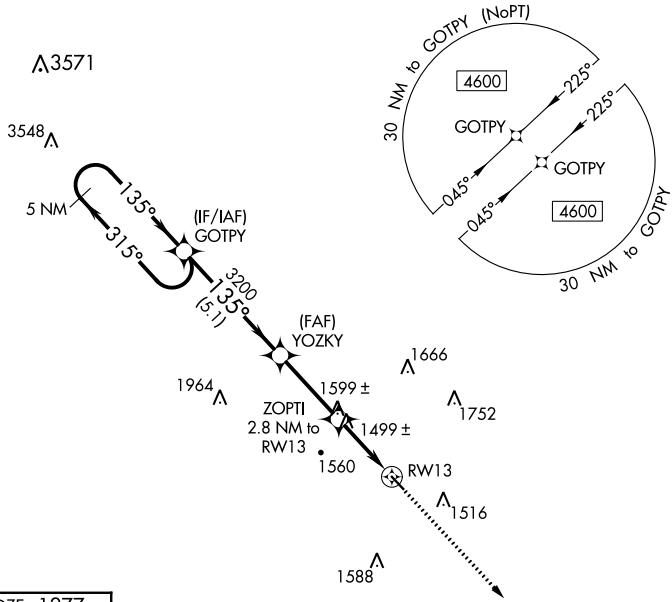


APP CRS	Rwy Idg	<b>3634</b>
<b>135°</b>	TDZE	<b>1277</b>
	Apt Elev	<b>1311</b>

# RNAV (GPS) RWY 13

AVA BILL MARTIN MEML (AOV)

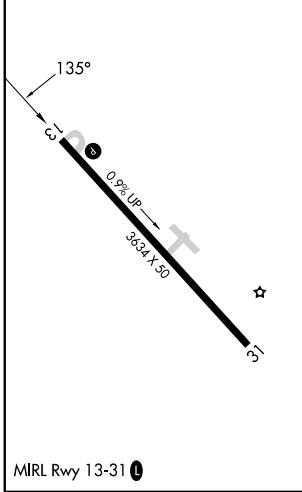
RNP APCH.	<p>Procedure NA at night. Use Branson altimeter setting, if not received use Springfield Branson Natl altimeter setting and increase all MDA 20 feet. Rwy 13 helicopter visibility reduction below 1 SM NA.</p>	<p>MISSED APPROACH: Climb to 3500 direct GAHSU and hold.</p>
<p><b>NA</b></p>		
<p>BBG AWOS-3 <b>124.625</b></p>	<p>SPRINGFIELD APP CON <b>126.35</b></p>	<p>UNICOM <b>122.7 (CTAF) 0</b></p>



NC-3, 31 OCT 2024 to 28 NOV 2024

NC-3, 31 OCT 2024 to 28 NOV 2024

ELEV 1311	TDZE 1277
-----------	-----------



<p>5 NM Holding Pattern</p> <p>4600 ← 315°</p> <p>→ 135°</p>		<p>VGSI and RNAV glidepath not coincident (VGSI Angle 3.00/TCH 43).</p> <p>3500</p> <p>GAHSU</p>	
<p>GOTPY</p> <p>3200</p>		<p>YOZKY</p> <p>ZOPTI 2.8 NM to RW13</p> <p>3.00° TCH 40</p> <p>2200</p> <p>RW13</p>	
<p>5.1 NM</p>		<p>3.1 NM</p>	
<p>2.8 NM</p>		<p>5 NM</p>	
CATEGORY	A	B	C
LNVA MDA	1840-1	563 (600-1)	NA