

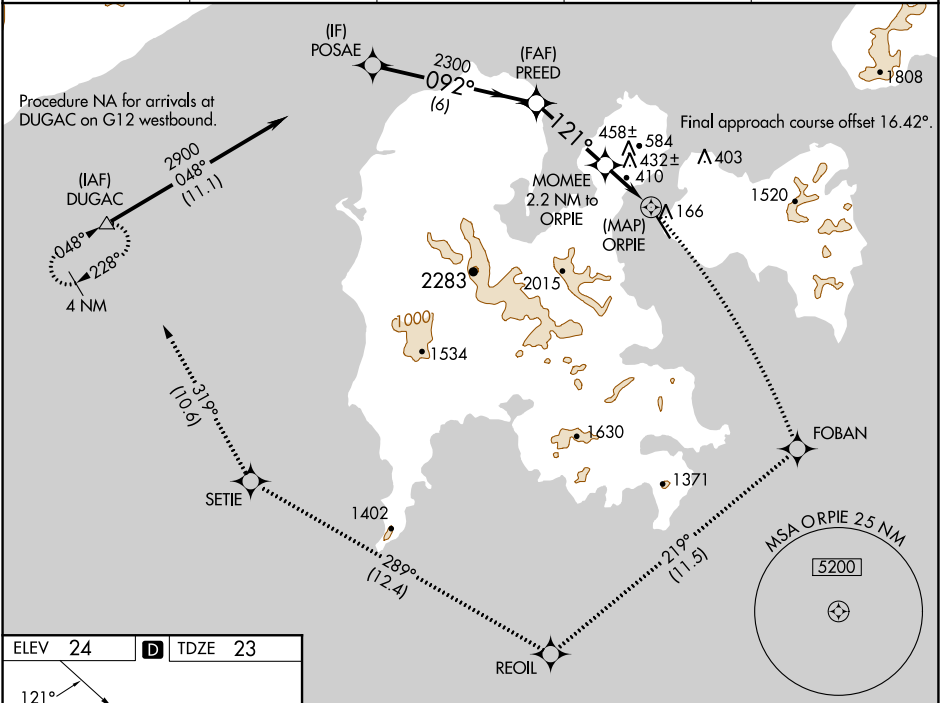
WAAS CH 56245 W14A	APP CRS 121°	Rwy Idg TDZE Apt Elev	4099 23 24
--	------------------------	-----------------------------	---------------------------------------

RNAV (GPS) Z RWY 14

SAND POINT (SDP) (PASD)

RNP APCH-GPS.		MISSED APPROACH: Climbing right turn to 5000 on the RNAV missed approach route to DUGAC and hold.		
Circling NA northeast of Rwy 14-32.				

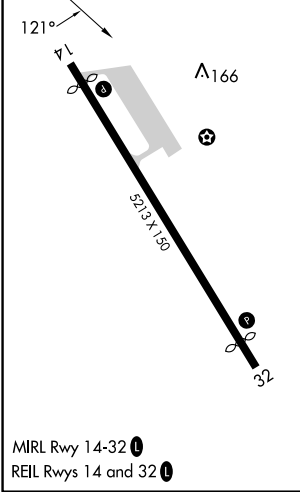
AWOS-3P 134.85	ANCHORAGE CENTER 125.35 346.3	CLNC DEL 122.3 (CTAF) 0	COLD BAY RADIO 122.3	UNICOM 122.8
--------------------------	---	-----------------------------------	--------------------------------	------------------------



AK, 11 JUL 2024 to 05 SEP 2024

AK, 11 JUL 2024 to 05 SEP 2024

ELEV 24	D	TDZE 23
----------------	----------	----------------



MIRL Rwy 14-32
REIL Rws 14 and 32

	5000	FOBAN	REOIL	SETIE	DUGAC
		tr 219°	tr 289°	tr 319°	
POSAGE	PREED	MOMEE	ORPIE	ORPIE	
2900	2300	1080			
	092°	121°			
	3.49° TCH 60	1.1 NM to ORPIE	1.1 NM to ORPIE	0.5	
	6 NM	3.3 NM	1.1 NM	1.1 NM	0.5
CATEGORY	A	B	C	D	
LP MDA	660-1	637 (700-1)	660-1¾	637 (700-1¾)	
LNAV MDA	820-1 797 (800-1)	820-1¼ 797 (800-1¼)	820-2½	797 (800-2½)	
C CIRCLING	820-1 796 (800-1)	820-1¼ 796 (800-1¼)	1580-3 1556 (1600-3)	2240-3 2216 (2300-3)	

SAND POINT, ALASKA
Amdt 2 02DEC21

55°19'N-160°31'W

RNAV (GPS) Z RWY 14