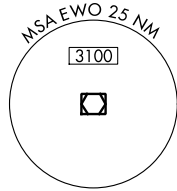


VOR/DME EWO <b>113.95</b> Chan 86 (Y)	APP CRS <b>088°</b>	Rwy Idg <b>4876</b> TDZE <b>854</b> Apt Elev <b>871</b>
---	------------------------	---

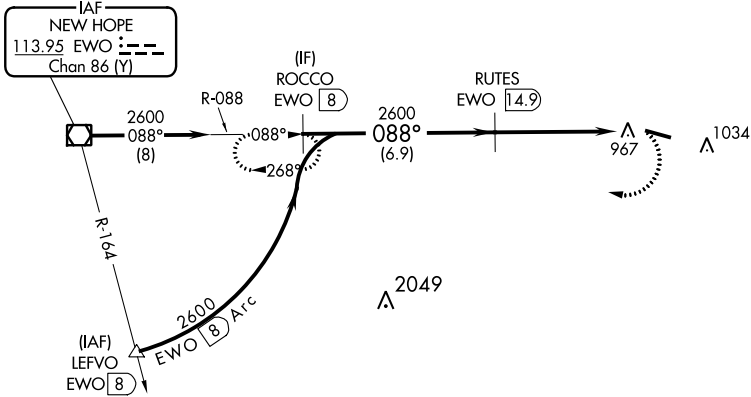
# VOR/DME RWY 11

LEBANON SPRINGFIELD-GEORGE HOERTER FLD (6I2)

<p><b>NA</b> When local altimeter setting not received, use Danville altimeter setting and increase all MDA 80 feet and increase Cat C and D visibility ¼ mile. Helicopter visibility reduction below ¾ SM NA.</p>	<p>MISSED APPROACH: Climbing right turn to 4000 on EWO VOR/DME R-088 to ROCCO/EWO 8 DME and hold.</p>	
<p>AWOS-3P <b>119.725</b></p>	<p>LOUISVILLE APP CON <b>132.075 327.0</b></p>	<p>UNICOM <b>122.8 (CTAF) 0</b></p>



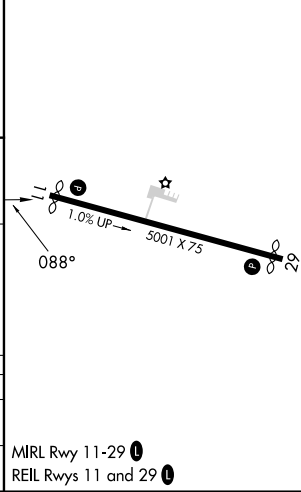
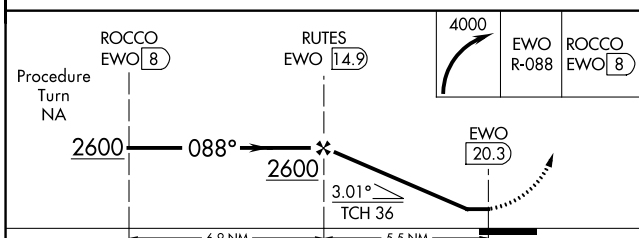
Procedure NA for arrivals at EWO VOR/DME on V178 westbound.



SE-1, 31 OCT 2024 to 28 NOV 2024

SE-1, 31 OCT 2024 to 28 NOV 2024

ELEV 871	TDZE 854
----------	----------



CATEGORY	A	B	C	D
S-11	1300-1	446 (500-1)	1300-1 3/8	446 (500-1 3/8)
CIRCLING	1460-1 589 (600-1)	1460-1 1/4 589 (600-1 1/4)	1460-1 1/2 589 (600-1 1/2)	1500-2 629 (700-2)

MRL Rwy 11-29 0  
REIL Rws 11 and 29 0