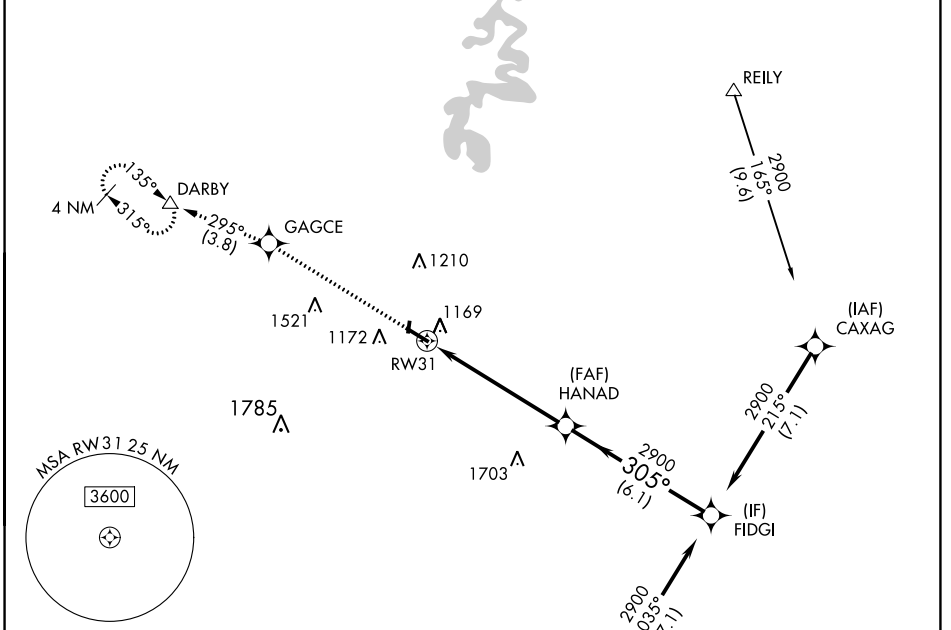


WAAS CH 70506 W31A	APP CRS 305°	Rwy Idg TDZE 1016 Apt Elev 1022	5000 1016 1022
--	------------------------	---	---

RNAV (GPS) RWY 31

STUART POWELL FLD (DVK)

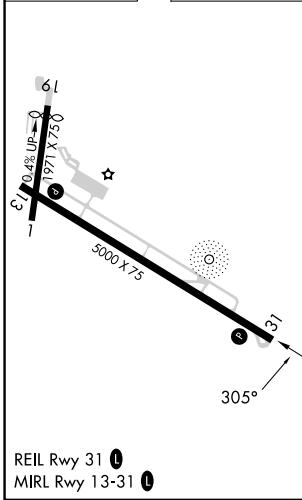
RNP APCH - GPS.		MISSED APPROACH: Climb to 3000 direct GAGCE and on track 295° to DARBY and hold.
AWOS-3 128.325	LEXINGTON APP CON 120.15 259.3	UNICOM 122.8 (CTAF) 0



SE-1, 08 AUG 2024 to 05 SEP 2024

SE-1, 08 AUG 2024 to 05 SEP 2024

ELEV 1022	TDZE 1016
-----------	-----------



3000	GAGCE	Ir	DARBY	HANAD	FIDGI
↑	✧	△			
		295°			
				2900	2900
				305°	
				2900	
					GP 3.00°
					TCH 30
				1.5 NM	4.4 NM
				1.5 NM to RW31	6.1 NM
CATEGORY	A	B	C	D	
LPV DA		1216-1	200 (200-1)		
LNAV/VNAV DA		1492-1 $\frac{3}{8}$	476 (500-1 $\frac{1}{8}$)		
LNAV MDA	1520-1	504 (500-1)	1520-1 $\frac{3}{8}$	504 (500-1 $\frac{1}{8}$)	
<input checked="" type="checkbox"/> CIRCLING	1520-1 498 (500-1)	1680-1 658 (700-1)	1720-2 698 (700-2)	1840-2 $\frac{3}{4}$ 818 (900-2 $\frac{3}{4}$)	