

NDB DVK 311	APP CRS 211°	Rwy ldg TDZE Apt Elev	N/A N/A 1022
-----------------------	------------------------	--------------------------	---

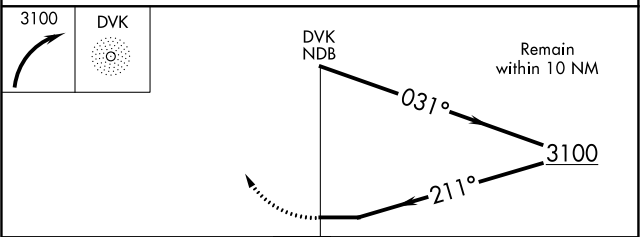
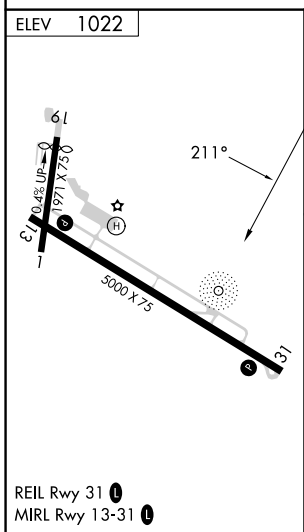
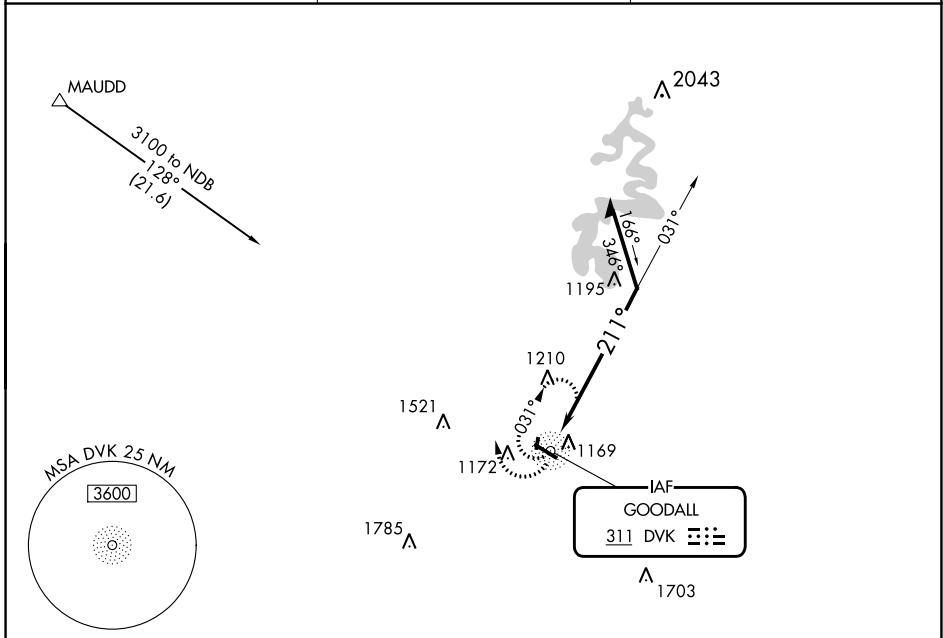
NDB-A

STUART POWELL FLD (DVK)

NA When local altimeter setting not received, use Lexington altimeter setting and increase all MDAs 80 feet and visibility Cats C and D ¼ mile. Rwy 1, 19 helicopter visibility reduction below 1 SM NA. Circling Rwy 1, 19 NA at night.

MISSED APPROACH: Climbing right turn to 3100 in DVK NDB holding pattern.

AWOS-3 128.325	LEXINGTON APP CON 120.15 259.3	UNICOM 122.8 (CTAF)
--------------------------	--	-------------------------------



CATEGORY	A	B	C	D
CIRCLING	1600-1 578 (600-1)	1700-1 678 (700-1)	1720-2 698 (700-2)	1840-2¾ 818 (900-2¾)

SE-1, 31 OCT 2024 to 28 NOV 2024

SE-1, 31 OCT 2024 to 28 NOV 2024