

APP CRS 348°	Rwy Idg 4000
	TDZE 473
	Apt Elev 484

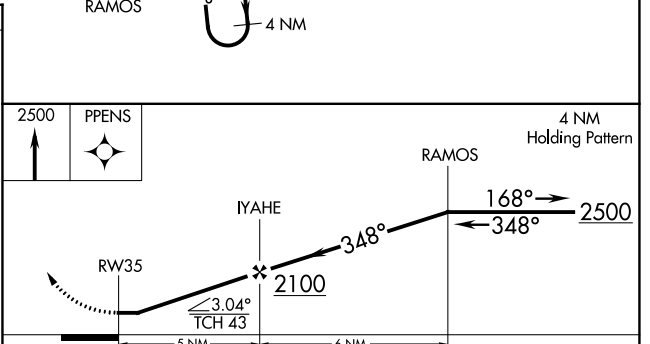
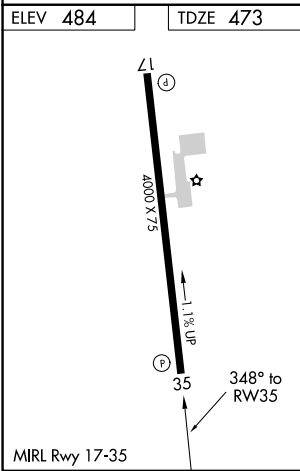
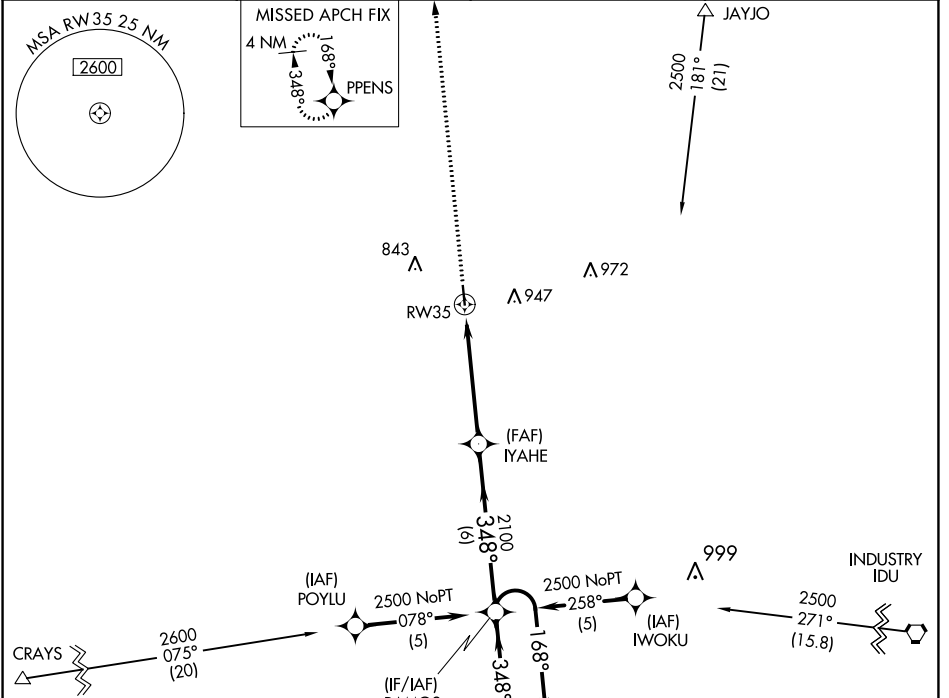
RNAV (GPS) RWY 35

GIDDINGS-LEE COUNTY (GYB)

⚠ DME/DME RNP-0.3 NA. Procedure NA at night. Helicopter visibility reduction below 1 SM NA. When local altimeter setting not received, use Austin-Bergstrom Intl altimeter setting and increase all MDA 100 feet; increase visibility Cat C ¼ SM.

⚠ MISSED APPROACH: Climb to 2500 direct PPENS and hold.

AWOS-3 119.225	AUSTIN APP CON 127.225 317.65	UNICOM 123.05 (CTAF)
--------------------------	---	--------------------------------



CATEGORY	A	B	C	D
LNAV MDA	960-1	487 (500-1)	960-1¼ 487 (500-1¼)	NA
CIRCLING	960-1 476 (500-1)	1160-1 676 (700-1)	1240-2¼ 756 (800-2¼)	NA

SC-5, 31 OCT 2024 to 28 NOV 2024

SC-5, 31 OCT 2024 to 28 NOV 2024