

APP CRS <b>059°</b>	Rwy Idg TDZE Apt Elev	<b>N/A</b> <b>N/A</b> <b>669</b>
------------------------	-----------------------------	--

# RNAV (GPS)-B

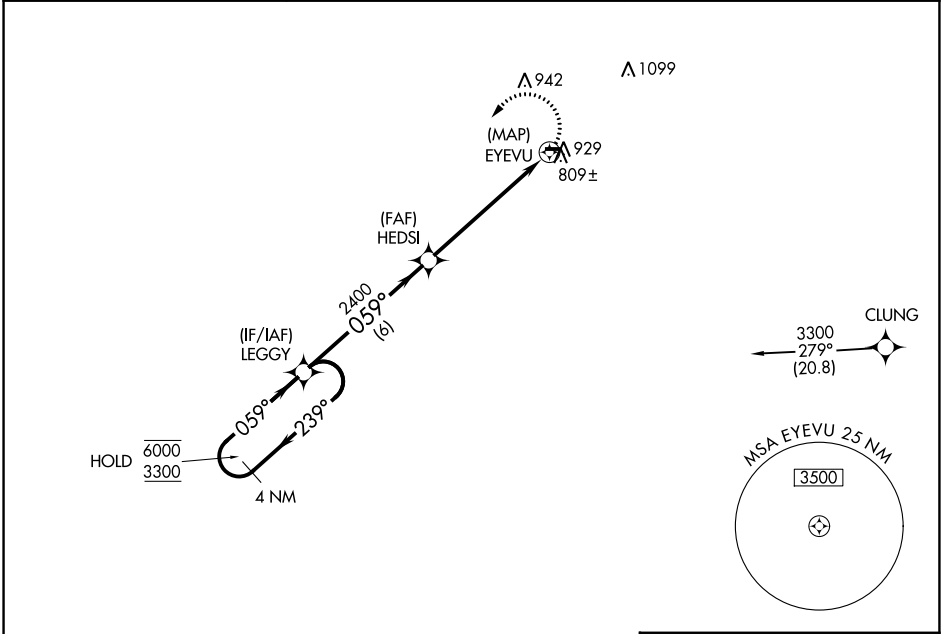
PINE HILL (9G6)

RNP APCH - GPS

**NA** Rwy 10 and 28 helicopter visibility reduction below 1 SM NA. Use Buffalo Niagara Intl altimeter setting; when not received, use Niagara Falls Intl altimeter setting and increase all MDA 20 feet. Procedure NA at night.

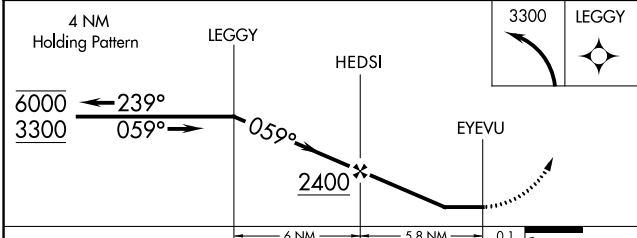
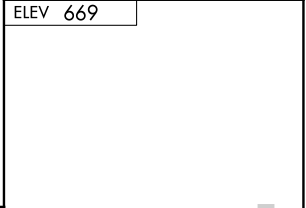
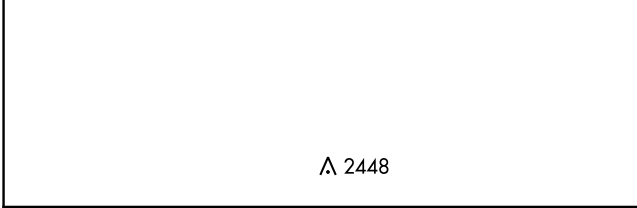
MISSED APPROACH: Climbing left turn to 3300 direct LEGGY and hold.

BUF AWOS <b>135.35</b>	BUFFALO APP CON <b>126.15 263.125</b>	UNICOM <b>123.0 (CTAF)</b>
---------------------------	--	-------------------------------



NE-2, 31 OCT 2024 to 28 NOV 2024

NE-2, 31 OCT 2024 to 28 NOV 2024



CATEGORY	A	B	C	D
<b>C</b> CIRCLING	1360-1	691 (700-1)	NA	NA