

WAAS CH <b>78215</b> <b>W13A</b>	APP CRS <b>134°</b>	Rwy Idg TDZE Apt Elev	<b>4012</b> <b>837</b> <b>841</b>
--	------------------------	-----------------------------	---

# RNAV (GPS) RWY 13

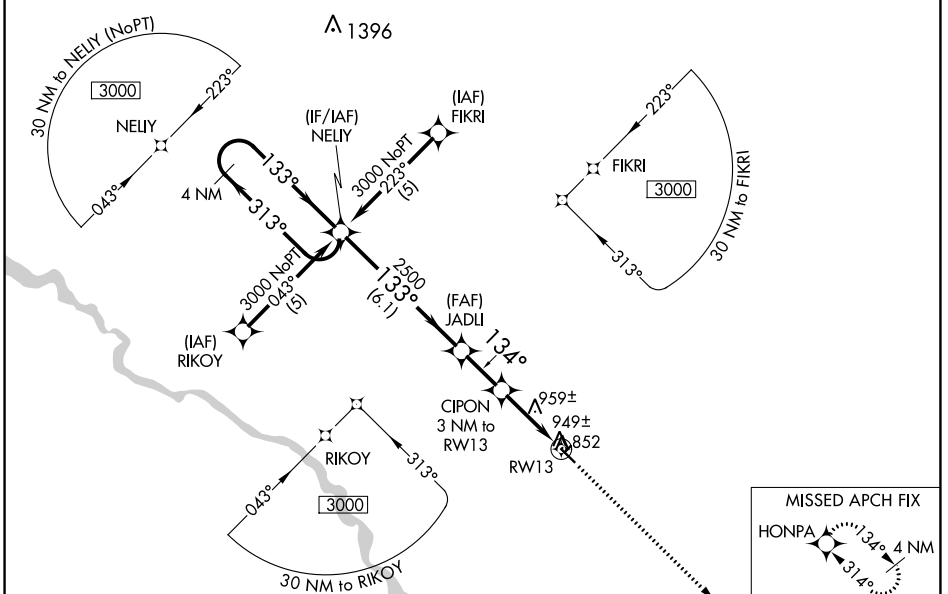
OSKALOOSA MUNI (00A)

RNP APCH.

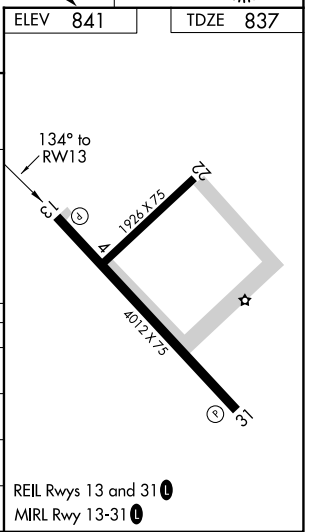
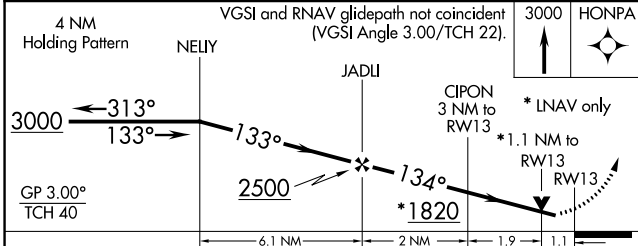
When local altimeter setting not received, use Ottumwa altimeter setting and increase all DA 18 feet and all MDA 20 feet and increase LNAV/VNAV all Cats visibility ¼ mile. Baro-VNAV and VDP NA when using Ottumwa altimeter setting. For uncompensated Baro-VNAV systems, LNAV/VNAV NA below -1.6°C (4°F) or above 54°C (130°F).

MISSED APPROACH: Climb to 3000 direct HONPA and hold.

AWOS-3 <b>118.625</b>	CHICAGO CENTER <b>118.15 335.575</b>	UNICOM <b>122.8 (CTAF) 0</b>
--------------------------	---	---------------------------------



ELEV 841	TDZE 837
----------	----------



CATEGORY	A	B	C	D
LPV DA	1193-1¼	356 (400-1¼)		NA
LNAV/VNAV DA	1219-1¼	382 (400-1¼)		NA
LNAV MDA	1220-1	383 (400-1)		NA
CIRCLING	1260-1 419 (500-1)	1300-1 459 (500-1)	1300-1½ 459 (500-1½)	NA

NC-3, 05 SEP 2024 to 03 OCT 2024

NC-3, 05 SEP 2024 to 03 OCT 2024

REIL Rwy 13 and 31 0  
MIRL Rwy 13-31 0