

WAAS CH 45803 W19A	APP CRS 187°	Rwy Idg 4206 TDZE 795 Apt Elev 798
--	------------------------	---

RNAV (GPS) RWY 19

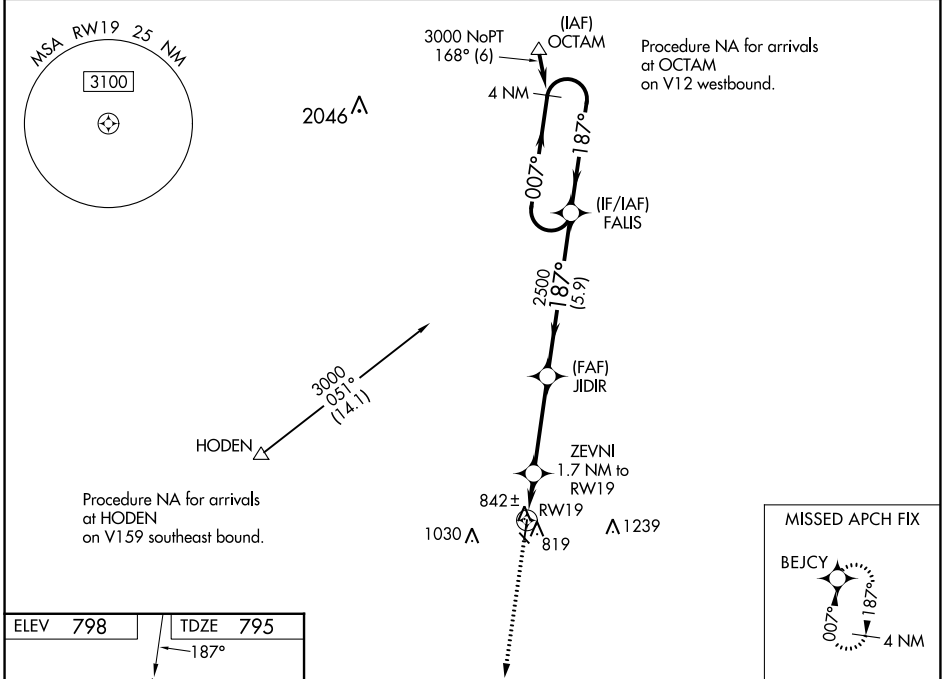
SKYHAVEN (RCM)

RNP APCH - GPS.

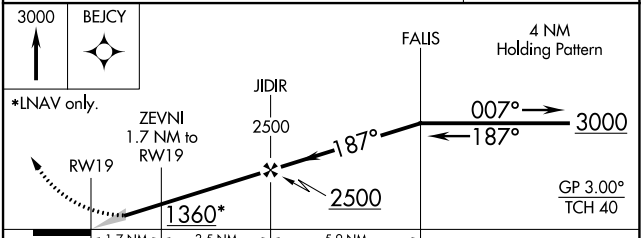
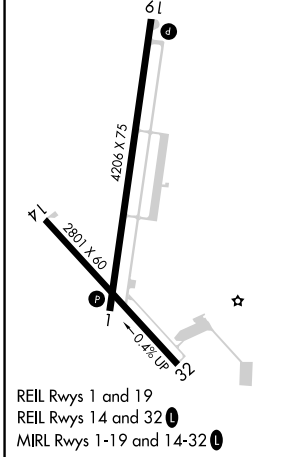
⚠ Baro-VNAV NA when using Whiteman AFB altimeter setting. For uncompensated Baro-VNAV systems, LNAV/VNAV NA below -16°C or above 54°C. When local altimeter setting not received, use Knob Noster altimeter setting and increase LPV DA to 1084 feet and all visibilities 1/8 SM. Increase LNAV/VNAV DA to 1139 feet and all visibilities 1/8 SM. Increase all MDAs 40 feet and Circling visibility Cat C 1/4 SM. Circling Rwy 32 NA at night.

MISSED APPROACH:
Climb to 3000 direct BEJCY and hold.

AWOS-3PT 119.575	WHITEMAN APP CON ★ 127.45 284.0	UNICOM 123.0 (CTAF) 0
----------------------------	---	---------------------------------



ELEV 798	TDZE 795
187°	



CATEGORY	A	B	C	D
LPV DA	1045-1	250 (300-1)		NA
LNAV/VNAV DA	1100-1	305 (400-1)		NA
LNAV MDA	1240-1	445 (500-1)	1240-1 ^{3/8} 445 (500-1 ^{3/8})	NA
C CIRCLING	1260-1 462 (500-1)	1340-1 542 (600-1)	1380-1 ^{1/2} 582 (600-1 ^{1/2})	NA

NC-3, 03 OCT 2024 to 31 OCT 2024

NC-3, 03 OCT 2024 to 31 OCT 2024