

WAAS CH <b>65903</b> <b>W01A</b>	APP CRS <b>007°</b>	Rwy Idg <b>4206</b> TDZE <b>794</b> Apt Elev <b>798</b>
--	------------------------	---

# RNAV (GPS) RWY 1

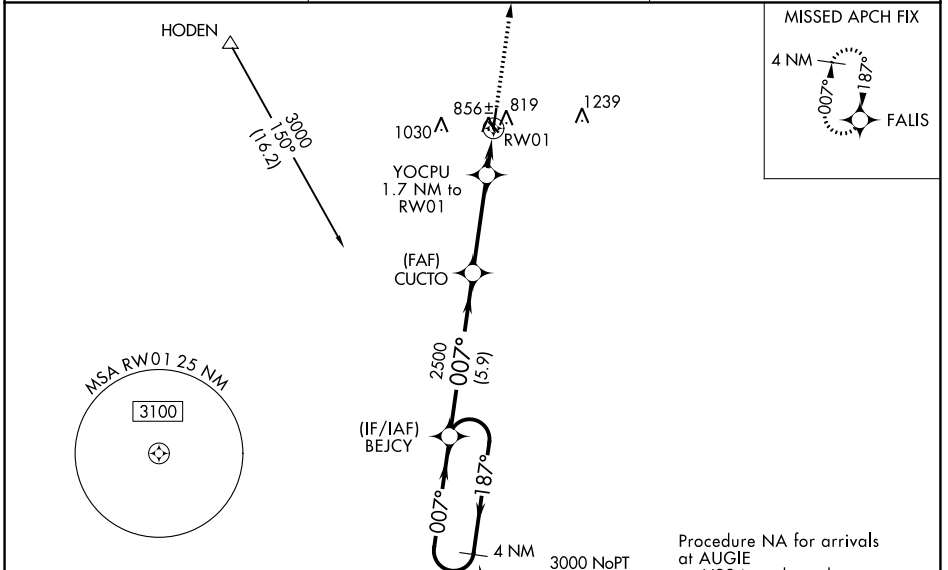
SKYHAVEN (RCM)

RNP APCH - GPS.

**⚠** Circling Rwy 32 NA at night. Baro-VNAV NA when using Whiteman AFB altimeter setting. For uncompensated Baro-VNAV systems, LNAV/VNAV NA below -16°C or above 54°C. Rwy 1 helicopter visibility reduction below 3/4 SM NA. When local altimeter setting not received, use Knob Noster altimeter setting and increase LPV DA to 1083 feet and all visibilities 1/2 SM. Increase LNAV/VNAV DA to 1194 feet and all visibilities 1/2 SM. Increase all MDAs 40 feet and LNAV visibility Cat C 1/2 SM, and Circling visibility Cat C 1/2 SM.

**MISSED APPROACH:** Climb to 3000 direct **FALIS** and hold.

AWOS-3PT <b>119.575</b>	WHITEMAN APP CON * <b>127.45 284.0</b>	UNICOM <b>123.0 (CTAF) 0</b>
----------------------------	---	---------------------------------

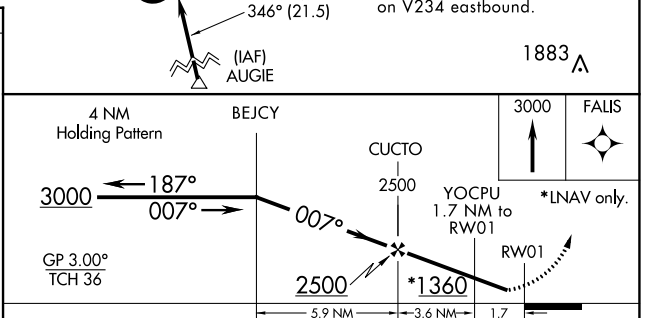
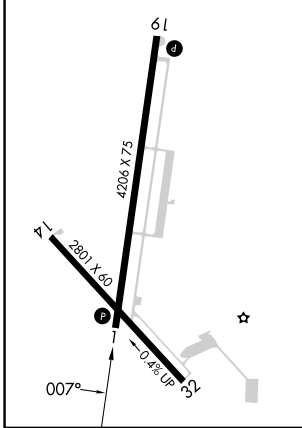


NC-3, 03 OCT 2024 to 31 OCT 2024

NC-3, 03 OCT 2024 to 31 OCT 2024

ELEV <b>798</b>	TDZE <b>794</b>
-----------------	-----------------

REIL Rwy 1 and 19  
REIL Rwy 14 and 32  
MIRL Rwy 1-19 and 14-32



CATEGORY	A	B	C	D
LPV DA	1044-1	250 (300-1)		NA
LNAV/VNAV DA	1155-1¼	361 (400-1¼)		NA
LNAV MDA	1220-1	426 (500-1)	1220-1¼ 426 (500-1¼)	NA
<b>C</b> CIRCLING	1260-1 462 (500-1)	1340-1 542 (600-1)	1380-1½ 582 (600-1½)	NA