

WAAS CH 72702 W32A	APP CRS 324°	Rwy Idg TDZE Apt Elev	7000 4304 4308
--	------------------------	-----------------------------	---

RNAV (GPS) RWY 32

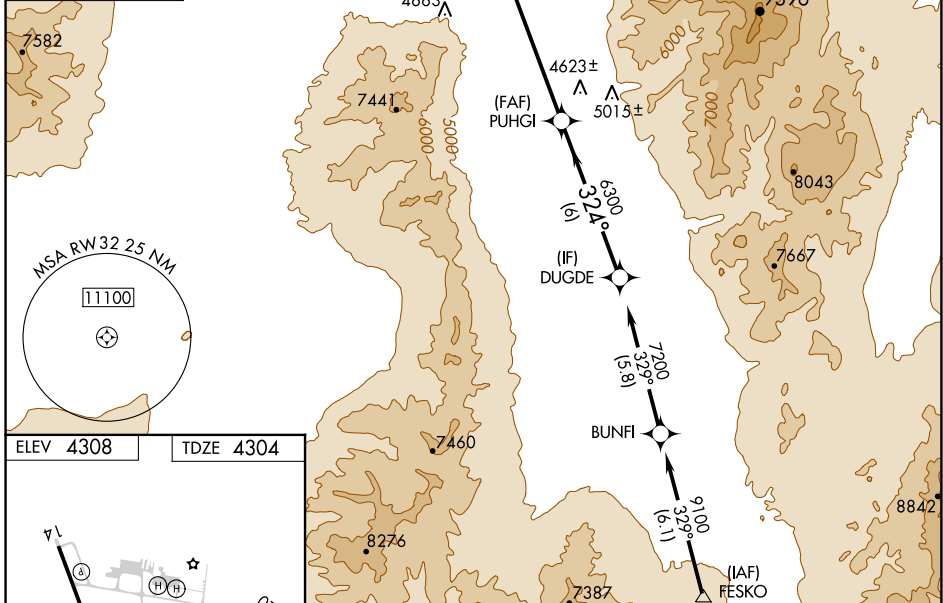
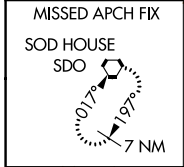
WINNEMUCCA MUNI (WMC)

RNP APCH.

⚠ Rwy 32 helicopter visibility reduction below $\frac{3}{4}$ SM NA.
⚠ VDP NA when using Battle Mountain altimeter setting.
 When local altimeter setting not received, use Battle Mountain altimeter setting and increase all DAs/MDAs 140 feet.

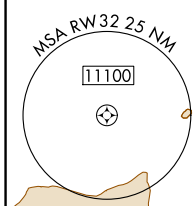
MISSED APPROACH: Climb to 10000 direct EXATY and on track 326° to SDO VORTAC and hold.

ASOS 120.175	SALT LAKE CITY CENTER 132.25 338.35	UNICOM 122.8 (CTAF) 0
------------------------	---	---------------------------------

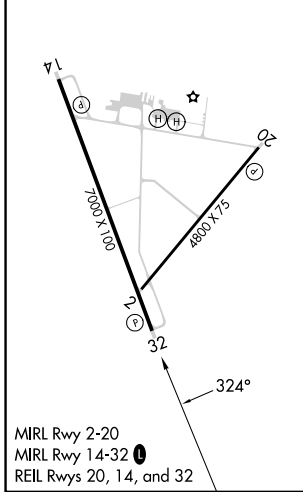


SW-4, 03 OCT 2024 to 31 OCT 2024

SW-4, 03 OCT 2024 to 31 OCT 2024



ELEV 4308	TDZE 4304
-----------	-----------



MIRL Rwy 2-20
 MIRL Rwy 14-32
 REIL Rws 20, 14, and 32

10000	EXATY	tr 326°	SDO	VGSJ And RNAV glidepath not coincident (VGSJ Angle 3.00/TCH 40).			
*LNAV only			*1.7 NM to RW32		DUGDE		7200
RW32			PUHGI		GP 3.00° TCH 45		
1.7 NM			4.3 NM		6 NM		
CATEGORY	A	B	C	D			
LPV DA	4554- $\frac{3}{4}$			250 (300- $\frac{3}{4}$)			
LNAV MDA	4880-1		576 (600-1)		4880-1 $\frac{1}{2}$		4880-1 $\frac{3}{4}$
					576 (600-1 $\frac{1}{2}$)		576 (600-1 $\frac{3}{4}$)