

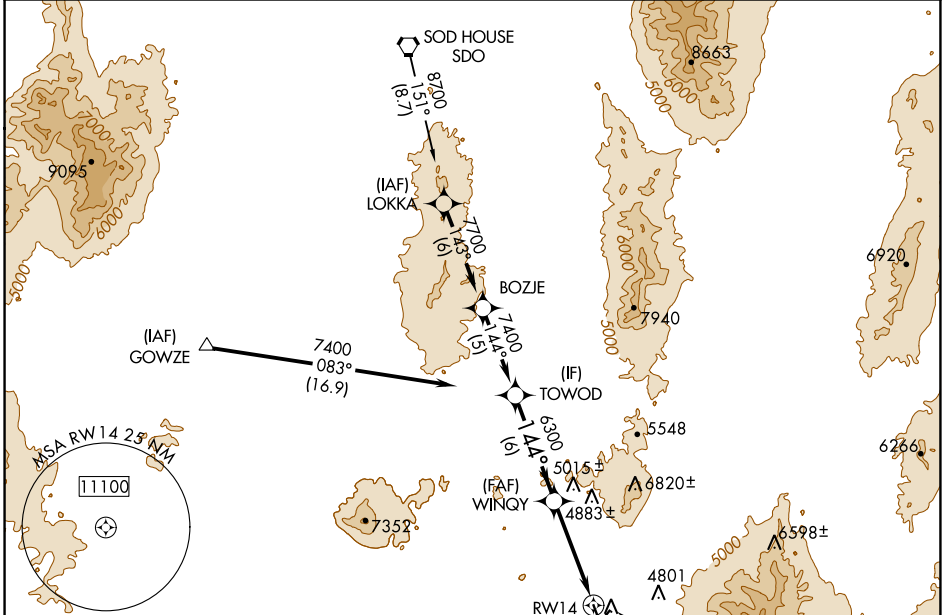
WAAS CH <b>62902</b> <b>W14A</b>	APP CRS <b>144°</b>	Rwy Idg <b>7000</b> TDZE <b>4304</b> Apt Elev <b>4308</b>
--	------------------------	---

# RNAV (GPS) RWY 14

WINNEMUCCA MUNI (WMC)

RNP APCH.	<p><b>▽</b> If local altimeter setting not received, use Battle Mountain altimeter setting and increase all DAs/MDAs 140 feet. <b>▲</b> VDP NA when using Battle Mountain altimeter setting.</p>	<p>MISSED APPROACH: Climb to 12000 direct MUXSU and via 147° track to CUTVA and hold, continue climb-in-hold to 12000.</p>
-----------	--	--

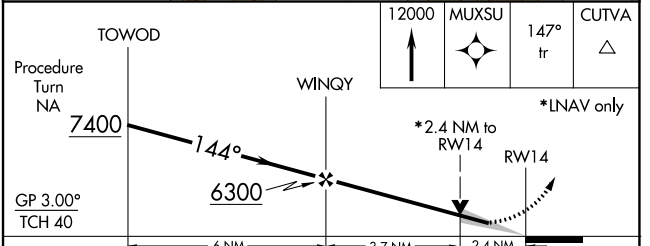
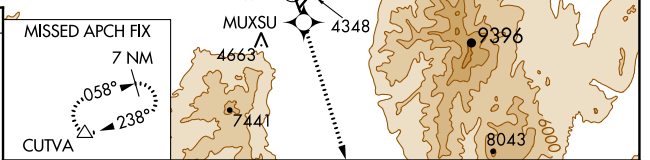
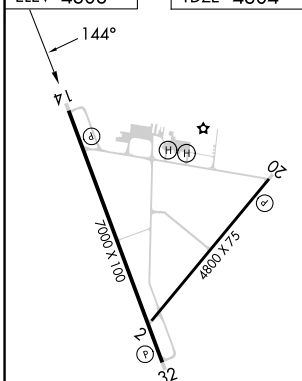
ASOS <b>120.175</b>	SALT LAKE CITY CENTER <b>132.25 338.35</b>	UNICOM <b>122.8 (CTAF) 0</b>
------------------------	---	---------------------------------



SW-4, 03 OCT 2024 to 31 OCT 2024

SW-4, 03 OCT 2024 to 31 OCT 2024

ELEV 4308	TDZE 4304
-----------	-----------



Procedure Turn NA	GP 3.00° TCH 40	12000	MUXSU	147° tr	CUTVA
CATEGORY	A	B	C	D	
LPV DA	4843-2 539 (600-2)				
RNAV MDA	5100-1 796 (800-1)	5100-1¼ 796 (800-1¼)	5100-2¼ 796 (800-2¼)	5100-2½ 796 (800-2½)	