

APP CRS	Rwy Idg	3005
180°	TDZE	890
	Apt Elev	890

RNAV (GPS) RWY 18

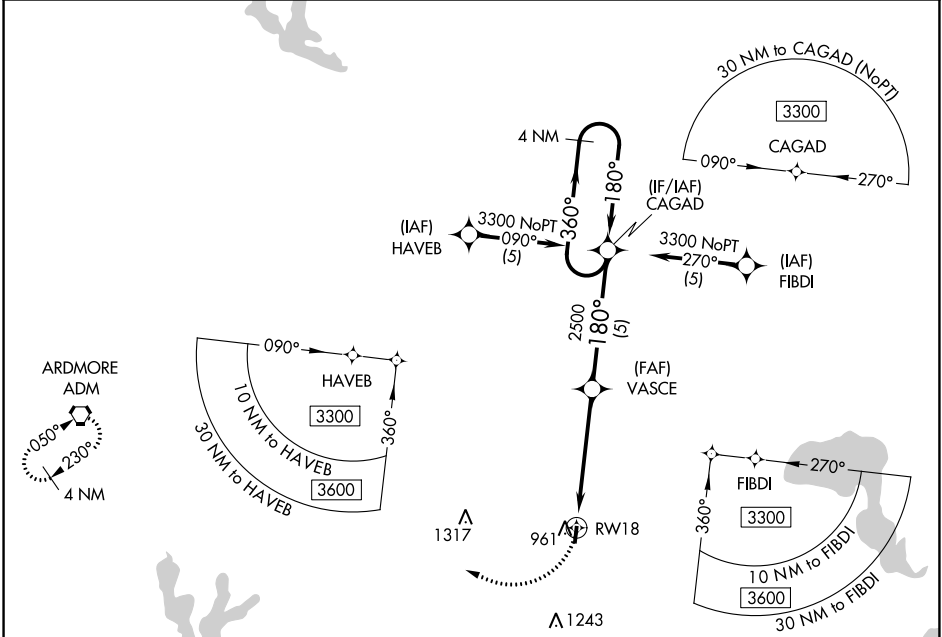
MADILL MUNI (1F4)

RNP APCH.

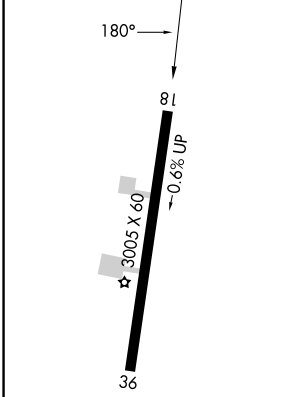
▼ Use Ardmore Downtown Exec altimeter setting when not received, use Mc Alester Rgnl altimeter setting and increase all MDA 140 feet. Procedure NA at night. Rwy 18, helicopter visibility reduction below 1 SM NA.

MISSED APPROACH: Climbing right turn to 2600 direct ADM VORTAC and hold.

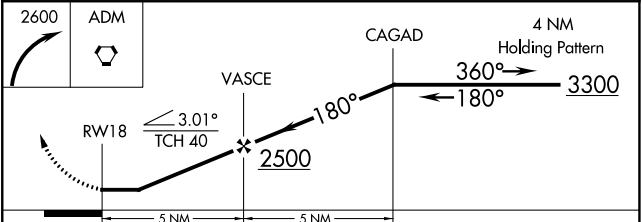
1F0 AWOS-3 118.15	FORT WORTH CENTER 124.75 323.0	CTAF 122.9
-----------------------------	--	----------------------



ELEV	890	TDZE	890
------	-----	------	-----



MIRL Rwy 18-36	1
REIL Rwy 18 and 36	



CATEGORY	A	B	C	D
LNAV MDA	1320-1 430 (500-1)			
CIRCLING	1360-1 470 (500-1)	1500-1 610 (700-1)	NA	

SC-1, 31 OCT 2024 to 28 NOV 2024

SC-1, 31 OCT 2024 to 28 NOV 2024