

WAAS CH <b>97700</b> <b>W29A</b>	APP CRS <b>291°</b>	Rwy Idg TDZE <b>11</b> Apt Elev <b>11</b>	<b>4319</b>
--	------------------------	---	-------------

# RNAV (GPS) RWY 29

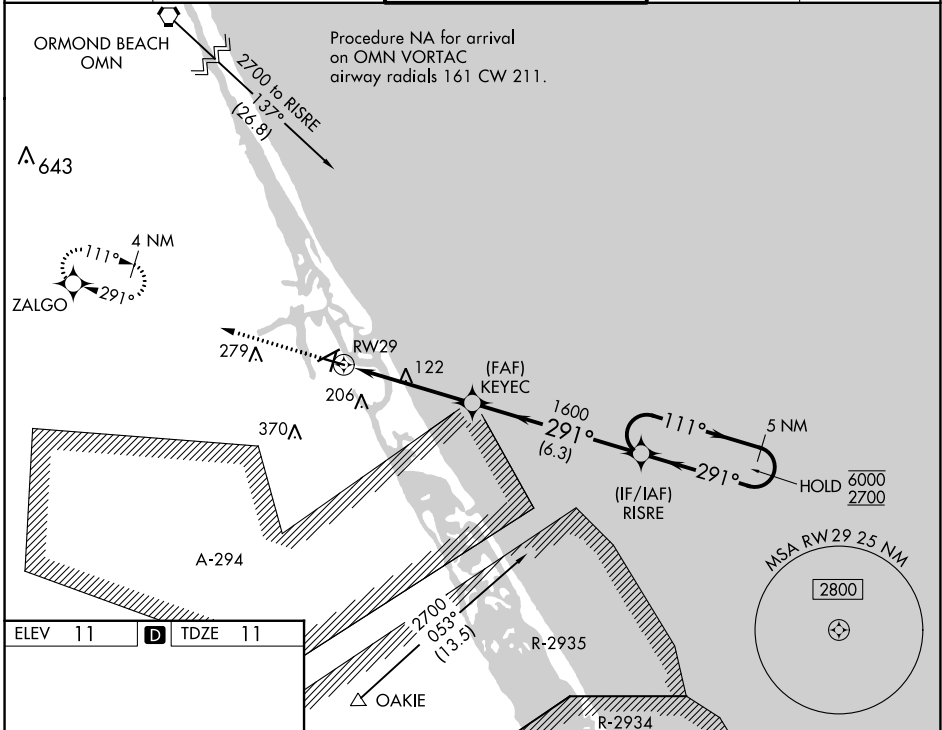
NEW SMYRNA BEACH MUNI (EVB)

RNP APCH-GPS.

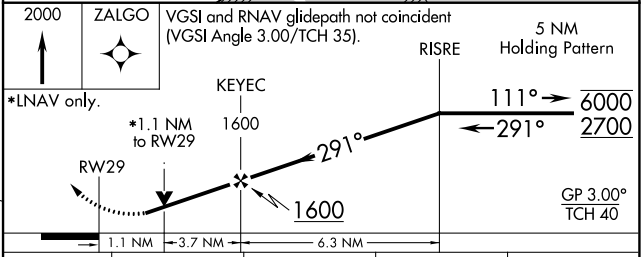
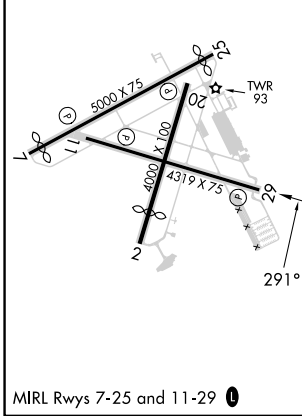
▼ Rwy 29 helicopter visibility reduction below 3/4 SM NA. VDP NA when using Daytona Beach altimeter setting. Circling Rwy 7, 11, 25 NA at night. When local altimeter setting not received, use Daytona Beach altimeter setting increase LPV DA to 333 feet and all visibilities 1/8 SM. Increase all MDAs 40 feet, LNAV Cat C/D visibility 1/8 SM, and Circling Cats C/D visibility 1/4 SM.

MISSED APPROACH: Climb to 2000 direct ZALGO and hold.

ATIS <b>124.625</b>	DAYTONA APP CON <b>125.35 322.3</b>	NEW SMYRNA BEACH TOWER ★ <b>119.675 (CTAF) 0</b>	GND CON <b>121.325</b>	UNICOM <b>122.95</b>
------------------------	--	---	---------------------------	-------------------------



ELEV 11	<b>D</b>	TDZE 11
---------	----------	---------



CATEGORY	A	B	C	D
LPV DA		308-7/8	297 (300-7/8)	
LNAV MDA		380-1	369 (400-1)	
<b>C</b> CIRCLING	440-1 429 (500-1)	520-1 509 (600-1)	680-1 3/4 669 (700-1 3/4)	680-2 669 (700-2)

SE-3, 31 OCT 2024 to 28 NOV 2024

SE-3, 31 OCT 2024 to 28 NOV 2024