

| | | |
|-------------|----------|-------------|
| APP CRS | Rwy ldg | 3300 |
| 239° | TDZE | 688 |
| | Apt Elev | 688 |

RNAV (GPS) RWY 24

FRANKLIN COUNTY RGNL (N68)

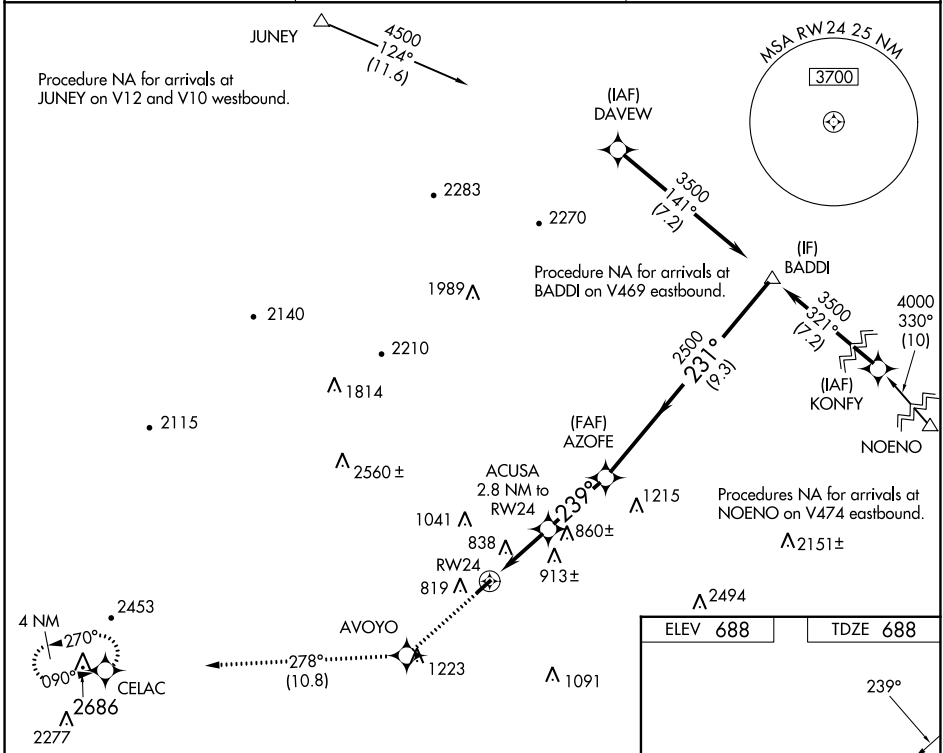
RNP APCH - GPS.

▼ Rwy 24 helicopter visibility reduction below 1 SM NA. When local altimeter setting not received, use Hagerstown, MD altimeter setting and increase all MDAs 400 feet, increase LNAV Cat C visibility ¼ SM. Straight-in and Circling Rwy 24 NA at night.

▲ NA

MISSED APPROACH: Climb to 4000 direct AVOYO and on track 278° to CELAC and hold, continue climb-in-hold to 4000.

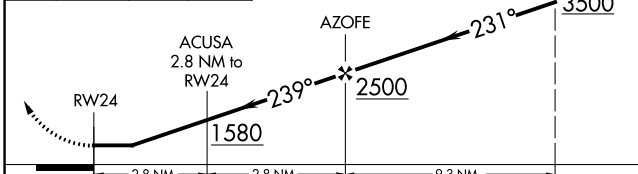
| | | |
|--------------------------|--|----------------------|
| AWOS-3 120.725 | HARRISBURG APP CON 124.1 273.525 | CTAF 122.9 |
|--------------------------|--|----------------------|



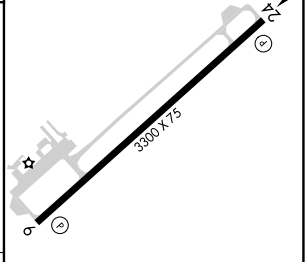
NE-4, 03 OCT 2024 to 31 OCT 2024

NE-4, 03 OCT 2024 to 31 OCT 2024

| | | | | |
|------|-------|------|-------|-----------------------------|
| 4000 | AVOYO | tr | CELAC | Visual Segment - Obstacles. |
| ↑ | ✧ | 278° | ✧ | |



| | |
|----------|----------|
| ELEV 688 | TDZE 688 |
|----------|----------|



| CATEGORY | A | B | C | D |
|----------|--------|-------------|-------------------------|----|
| LNAV MDA | 1100-1 | 412 (500-1) | 1100-1½ 412 (500-1½) | NA |
| CIRCLING | 1220-1 | 532 (600-1) | 1360-2 672 (700-2) | NA |

MIRL Rwy 6-24