

APP CRS **160°**
 Rwy Idg **5004**
 TDZE **1023**
 Apt Elev **1023**

RNAV (GPS) RWY 16

SEMINOLE MUNI (SRE)

RNP APCH

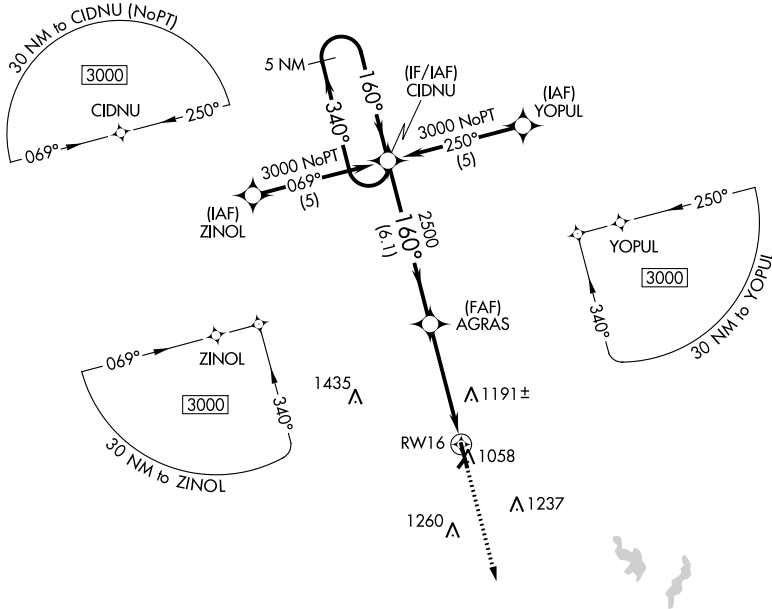
Procedure NA at night. Circling NA to Rwy 5 and 23. Rwy 16 helicopter visibility reduction below 1 SM NA. When local altimeter setting not received, use Shawnee Rgnl altimeter setting and increase all MDAs 40 feet, and increase Circling Cat C visibility ¼ SM.

MISSED APPROACH: Climb to 3000 direct FANAD and hold.

AWOS-3
118.625

FORT WORTH CENTER
132.2 338.35

UNICOM
122.80



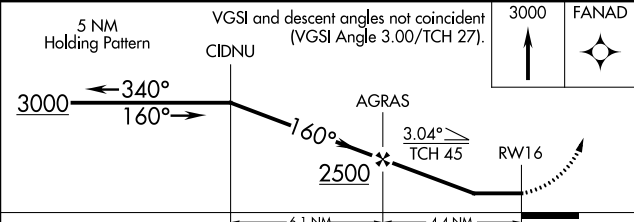
SC-1, 03 OCT 2024 to 31 OCT 2024

SC-1, 03 OCT 2024 to 31 OCT 2024

ELEV 1023 TDZE 1023



REIL Rwy 16-34
 MIRL Rwy 16-34



| CATEGORY | A | B | C | D |
|----------|-----------------------|-----------------------|-------------------------|----|
| LNAV MDA | 1500-1 | 477 (500-1) | 1500-1¼ 477 (500-1¼) | NA |
| CIRCLING | 1500-1 477 (500-1) | 1560-1 537 (600-1) | 1620-1½ 597 (600-1½) | NA |