

LOC/DME I-HQZ 109.75 Chan 34 (Y)	APP CRS 178°	Rwy Idg 6000 TDZE 447 Apt Elev 447
--	------------------------	---

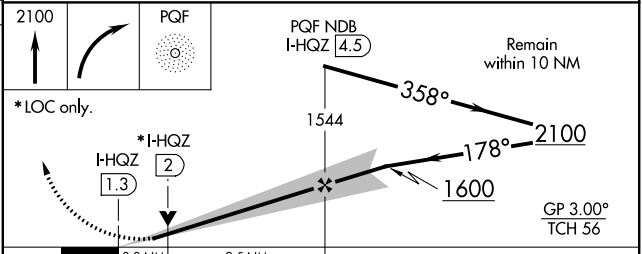
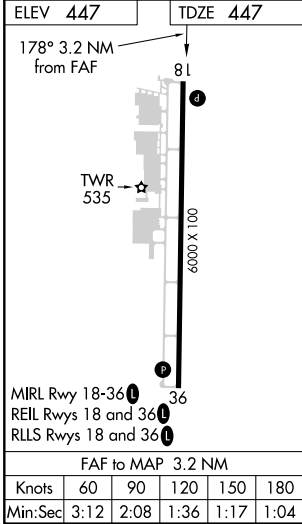
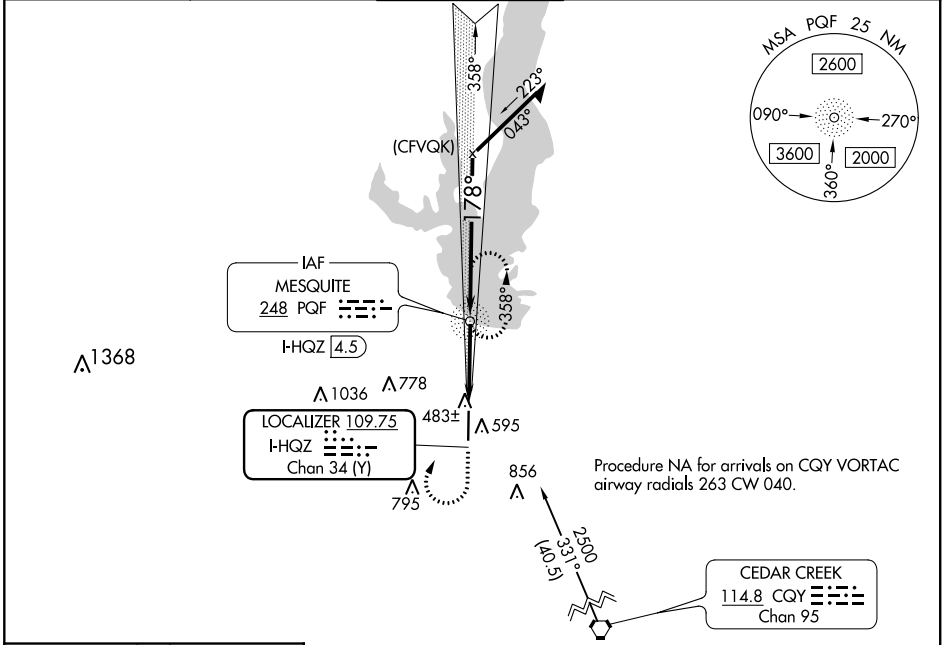
ILS or LOC RWY 18

MESQUITE METRO (HQZ)

V VDP NA with Dallas Love Fld altimeter setting.
A When local altimeter setting not received, use Dallas Love Fld altimeter setting.
 ADF Required.

MISSED APPROACH: Climb to 2100 then right turn direct PQF NDB and hold.

AWOS-3 118.175	REGIONAL APP CON 125.2 343.65	MESQUITE TOWER★ 120.3 (CTAF) 0	GND CON 118.85	UNICOM 123.05
--------------------------	---	---	--------------------------	-------------------------



CATEGORY	A	B	C	D
S-ILS 18	697- ³ / ₄ 250 (300- ³ / ₄)			NA
S-LOC 18	740-1	293 (300-1)	740- ⁷ / ₈ 293 (300- ⁷ / ₈)	NA
C CIRCLING	960-1	513 (600-1)	1160-2 713 (800-2)	NA
DALLAS-LOVE FLD ALTIMETER SETTING MINIMUMS				
S-ILS 18	743- ⁷ / ₈ 296 (300- ⁷ / ₈)			NA
S-LOC 18	800-1 353 (400-1)			NA
C CIRCLING	1020-1	573 (600-1)	1220-2 ¹ / ₄ 773 (800-2 ¹ / ₄)	NA

SC-2, 30 DEC 2021 to 27 JAN 2022

SC-2, 30 DEC 2021 to 27 JAN 2022