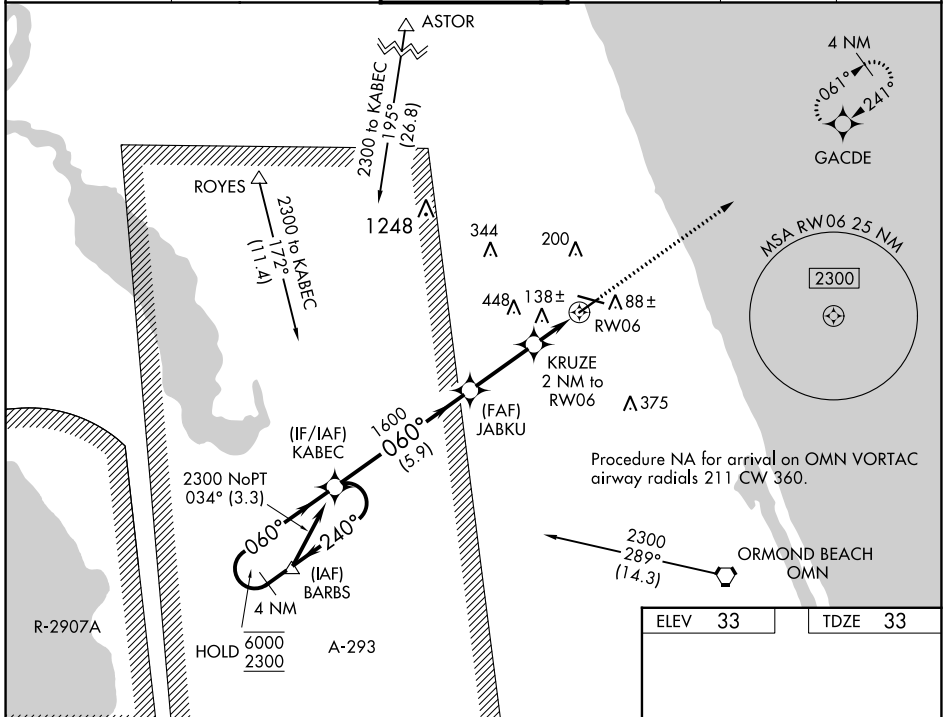


WAAS CH <b>49209</b> <b>W06A</b>	APP CRS <b>060°</b>	Rwy Idg TDZE Apt Elev	<b>5001</b> <b>33</b> <b>33</b>
--	------------------------	-----------------------------	---------------------------------------

# RNAV (GPS) RWY 6

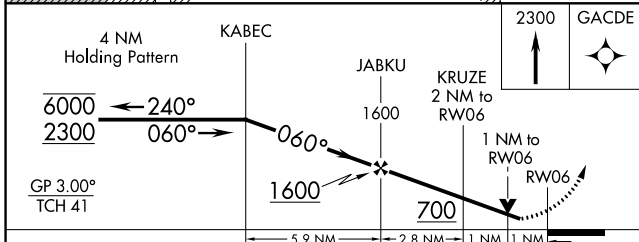
FLAGLER EXEC (FIN)

RNP APCH-GPS.		MISSED APPROACH: Climb to 2300 direct GACDE and hold.			
ATIS <b>128.325</b>	DAYTONA APP CON <b>125.8 269.075</b>	FLAGLER TOWER ★ <b>118.95 (CTAF) 0</b>	GND CON <b>121.75</b>	CLNC DEL <b>121.75</b>	UNICOM <b>123.0</b>

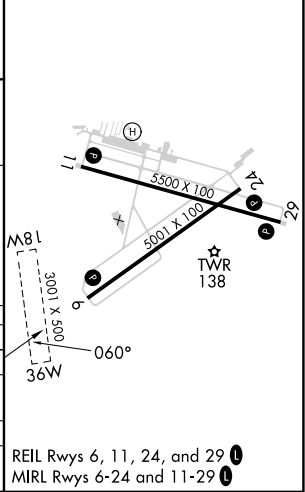


SE-3, 31 OCT 2024 to 28 NOV 2024

SE-3, 31 OCT 2024 to 28 NOV 2024



ELEV 33	TDZE 33
---------	---------



CATEGORY	A	B	C	D
LPV DA		312-7/8	279 (300-7/8)	
LNAV/VNAV DA		292-3/4	259 (300-3/4)	
LNAV MDA		400-1	367 (400-1)	
CIRCLING	500-1 467 (500-1)	760-2 727 (800-2)	760-2 727 (800-2 1/4)	

REIL Rwy 6, 11, 24, and 29  
MIRL Rwy 6-24 and 11-29