

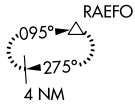
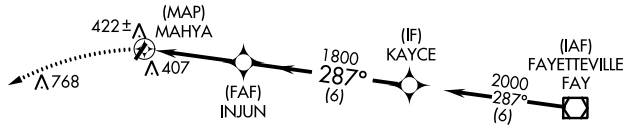
APP CRS	Rwy Idg	<b>N/A</b>
<b>287°</b>	TDZE	<b>N/A</b>
	Apt Elev	<b>304</b>

**RNAV (GPS)-A**  
P K AIRPARK (5W4)

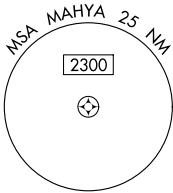
<p><b>▼</b> DME/DME RNP-0.3 NA. Procedure NA at night. Use Fayetteville altimeter setting.</p>	<p>MISSED APPROACH: Climbing left turn to 3000 direct RAEFO and hold.</p>
<p>FAYETTEVILLE APP CON <b>127.8 290.25</b></p>	<p>UNICOM <b>123.0 (CTAF)</b></p>

SE-2, 03 OCT 2024 to 31 OCT 2024

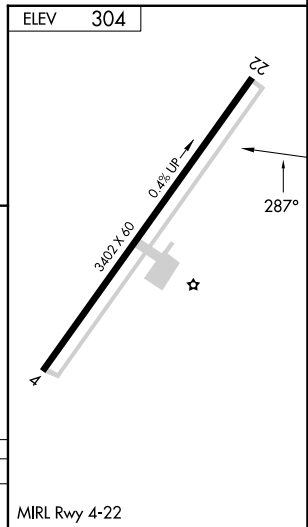
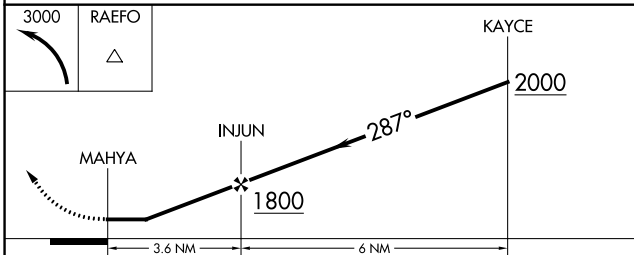
SE-2, 03 OCT 2024 to 31 OCT 2024



Procedure NA for arrival on FAY VOR/DME airway radials 225 CW 009.



1249  $\Delta$



CATEGORY	A	B	C	D
<b>C</b> CIRCLING	840-1 536 (600-1)	860-1 556 (600-1)	920-1 $\frac{3}{4}$ 616 (700-1 $\frac{3}{4}$ )	NA