

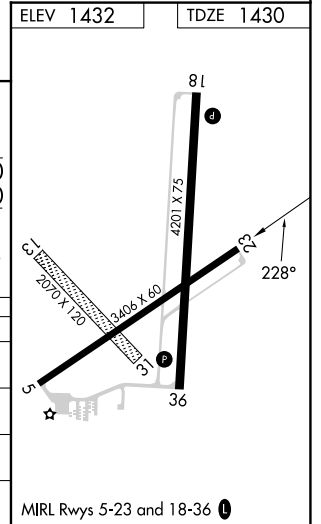
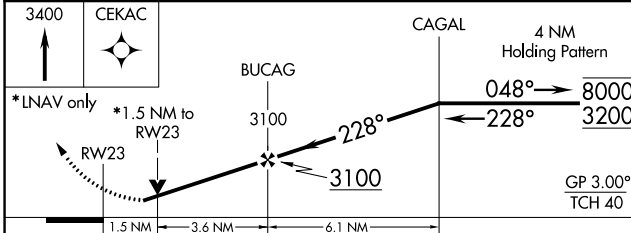
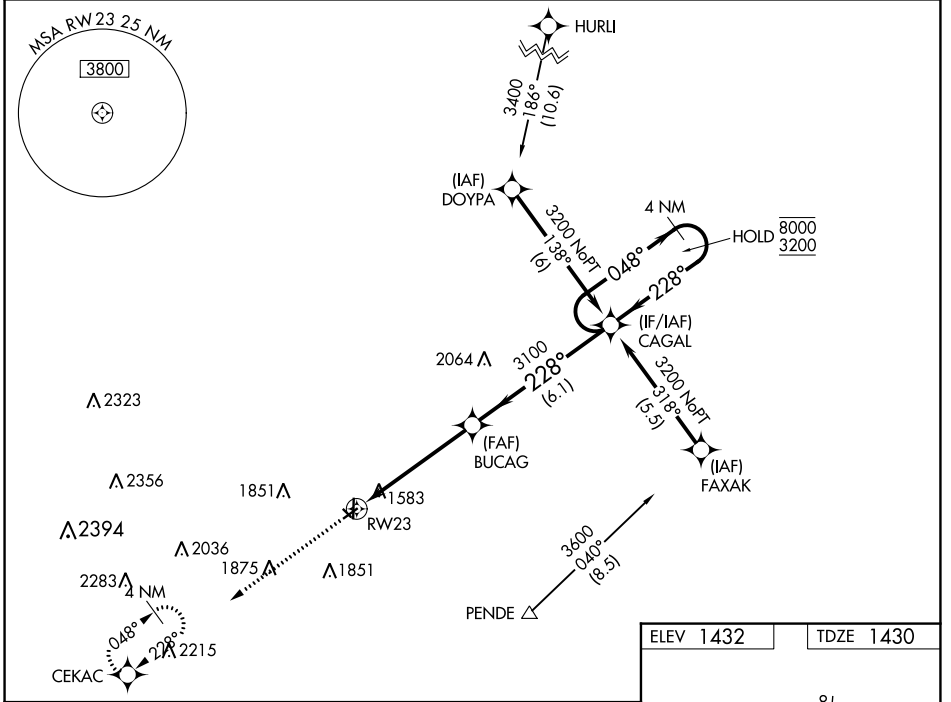
WAAS CH <b>82523</b> <b>W23A</b>	APP CRS <b>228°</b>	Rwy Idg TDZE Apt Elev	<b>3406</b> <b>1430</b> <b>1432</b>
--	------------------------	-----------------------------	---

# RNAV (GPS) RWY 23

WAYNE MUNI/STAN MORRIS FLD (L.C.G)

RNP APCH.	MISSED APPROACH: Climb to 3400 direct CEKAC and hold.
<p>⚠ Circling NA to Rwy 13 and 31. Rwy 23 helicopter visibility reduction below 3/4 SM NA. For uncompensated Baro-VNAV systems, LNAV/VNAV NA below -17°C or above 54°C.</p>	

AWOS-3 <b>120.125</b>	SIoux CITY APP CON * <b>124.6 307.0</b>	UNICOM <b>122.8 (CTAF) ①</b>
--------------------------	--	---------------------------------



CATEGORY	A	B	C	D
LPV DA	1866-1½	436 (500-1½)		NA
LNAV/VNAV DA	1869-1½	439 (500-1½)		NA
LNAV MDA	1940-1	510 (600-1)		NA
CIRCLING	2000-1	568 (600-1)		NA

NC-2, 31 OCT 2024 to 28 NOV 2024

NC-2, 31 OCT 2024 to 28 NOV 2024

MIRL Rwy 5-23 and 18-36 ①