

COPTER ILS or LOC RWY 25

LOC/DME I-MUI 111.75 Chan 54(Y)	APCH CRS 250°	Rwy ldg THRE 480 Arpt Elev 487	[USA]	MUIR AHP (KMUI)
---	-------------------------	--	-------	-----------------

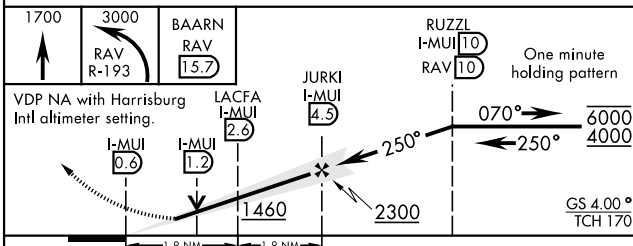
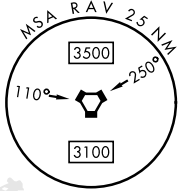
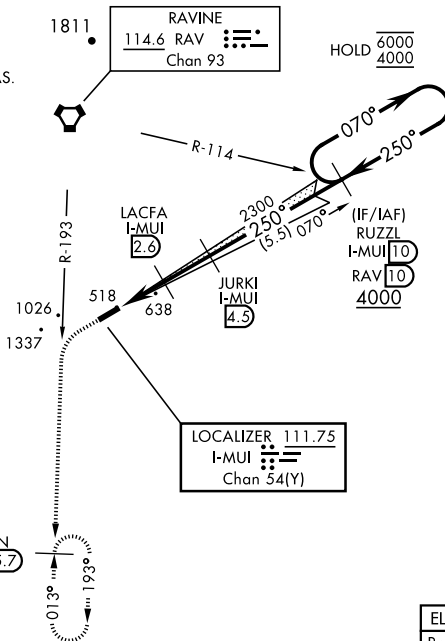
DME required	<p>▼ Use KMDT altimeter when local altimeter not available. When RAV VOR out of service, RNAV required to BAARN.</p> <p>▲ Non-RNAV equipped aircraft expect RADAR vectors.</p>	MISSED APPROACH: Climb to 1700 then climbing left turn to 3000 on RAV VORTAC R-193 to BAARN and hold, continue climb-in-hold to 3000.
--------------	--	---

ASOS 124.175	HARRISBURG APP/DEP CON 118.25 269.45	TOWER ★ 126.2(CTAF) 290.325	GND CON 135.675 269.525
------------------------	--	---------------------------------------	-----------------------------------

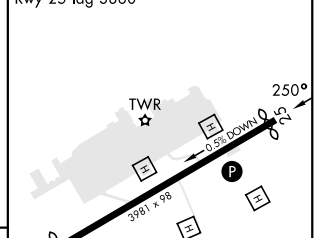
Knots	60	120	180	240	300	360
V/V(fpm)	435	870	1305	1740	2175	2610
Min climb of 435 ft/NM to 1800-Controlling Obstacle 1337'						

NOT FOR CIVIL USE

Rwy 25 helicopter visibility reduction below 3/8 mile not authorized.
Limit all segments to 90 KIAS.



ELEV	487	THRE	480
Rwy 07 ldg 3631' Rwy 25 ldg 3860'			



CATEGORY	COPTER		
S-ILS 25	821-1	334	(400-1)
S-LOC 25	900-1	413	(500-1)
KMDT (HARRISBURG INTL) ALTIMETER SETTING MINIMUMS			
S-ILS 25	885-1½	398	(400-1½)
S-LOC 25	980-1	493	(500-1)

REIL Rwy 07, 25	MRL Rwy 07-25
-----------------	---------------

COPTER ILS or LOC RWY 25

NE-4, 28 NOV 2024 to 26 DEC 2024

NE-4, 28 NOV 2024 to 26 DEC 2024