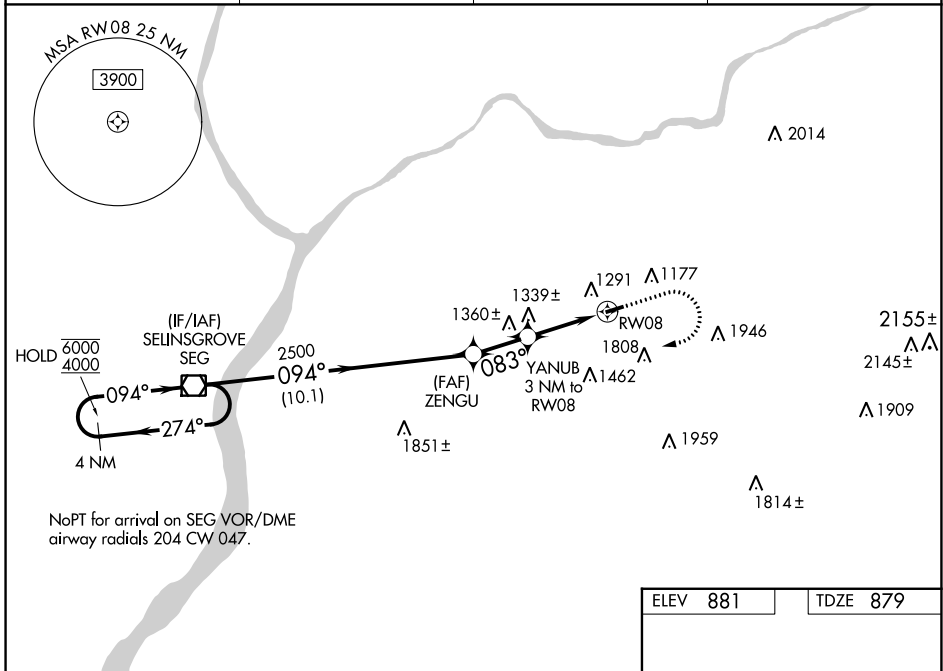


WAAS CH 87024 W08A	APP CRS 083°	Rwy Idg 3297 TDZE 879 Apt Elev 881
--	------------------------	---

RNAV (GPS) RWY 8
NORTHUMBERLAND COUNTY (N79)

RNP APCH - GPS.	<p>Baro-VNAV and VDP NA when using Selinsgrove altimeter setting. Rwy 8 helicopter visibility reduction below 3/4 SM NA. For uncompensated Baro-VNAV systems, LNAV/VNAV NA below -16°C or above 54°C. When local altimeter setting not received, use Selinsgrove altimeter setting and increase LPV DA to 1221 feet; increase LNAV/VNAV DA to 1695 feet and all visibilities 1/2 SM. Increase all MDAs 100 feet and LNAV visibility Cat C 1/2 SM.</p>	<p>MISSED APPROACH: Climb to 2300 then climbing right turn to 4000 direct SEG VOR/DME and hold.</p>
-----------------	---	---

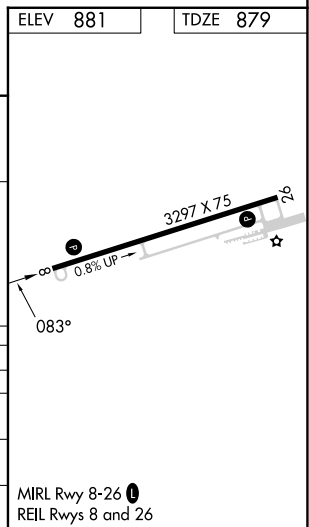
AWOS-3 119.175	HARRISBURG APP CON 118.25 269.45	UNICOM 122.8 (CTAF)	121.8
--------------------------	--	-------------------------------	--------------



NE-4, 03 OCT 2024 to 31 OCT 2024

NE-4, 03 OCT 2024 to 31 OCT 2024

4 NM Holding Pattern	SEG VOR/DME	ZENGU	YANUB 3 NM to RWY 08	RWY 08
6000 ← 274°	4000 → 094°	2500	2500	1840
GP 3.00°	TCH 40	10.1 NM	2.1 NM	0.8 NM
			2.2 NM	
CATEGORY	A	B	C	D
LPV DA		1129-1	250 (300-1)	NA
LNAV/VNAV DA		1603-2	724 (800-2)	NA
LNAV MDA	1620-1 741 (800-1)	1620-1 1/4 741 (800-1 1/4)	1620-2 741 (800-2)	NA
CIRCLING	1820-1 1/4 939 (1000-1 1/4)	1880-1 1/2 999 (1000-1 1/2)	2120-3 1239 (1300-3)	NA



MIRL Rwy 8-26
REIL Rwy 8 and 26