

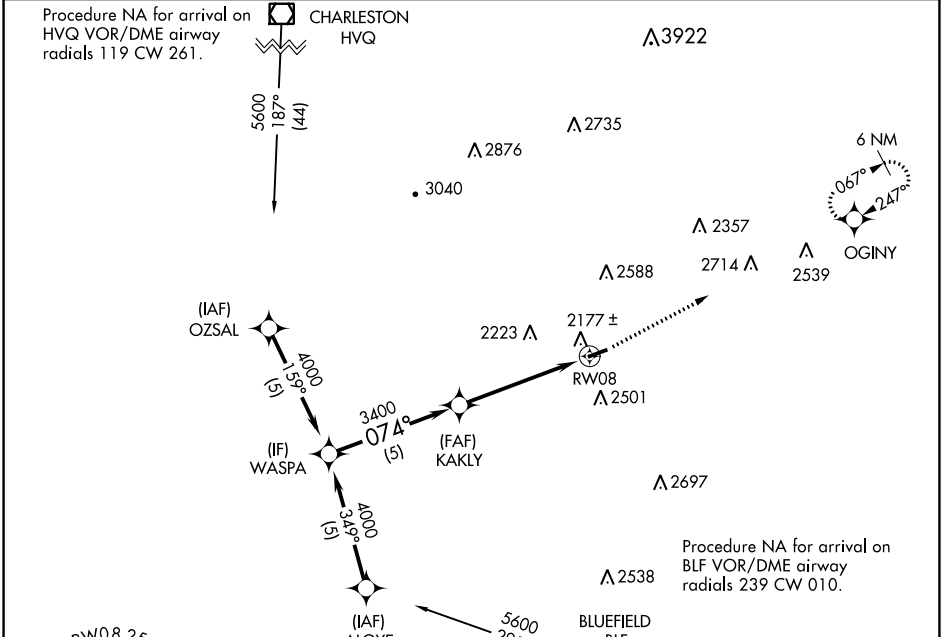
APP CRS	Rwy Idg	3701
074°	TDZE	1770
	Apt Elev	1783

RNAV (GPS) RWY 8

KEE FLD (I16)

RNP APCH - GPS.	MISSED APPROACH: Climb to 5000 direct OGINY and hold.
<p>▼ Rwy 8 helicopter visibility reduction below 1 SM NA.</p> <p>▲ NA Procedure NA at night.</p>	

AWOS-3 120.625	CHARLESTON APP CON 125.4 269.125	UNICOM 122.8 (CTAF) 0
--------------------------	--	---------------------------------



ELEV 1783	TDZE 1770
-----------	-----------



CATEGORY	A	B	C	D
LNNAV MDA	2460-1	690 (700-1)	2460-2	690 (700-2)
				NA

MIRL Rwy 8-26 0	REIL Rwy 8 and 26 0
-----------------	---------------------

NE-4, 03 OCT 2024 to 31 OCT 2024

NE-4, 03 OCT 2024 to 31 OCT 2024