

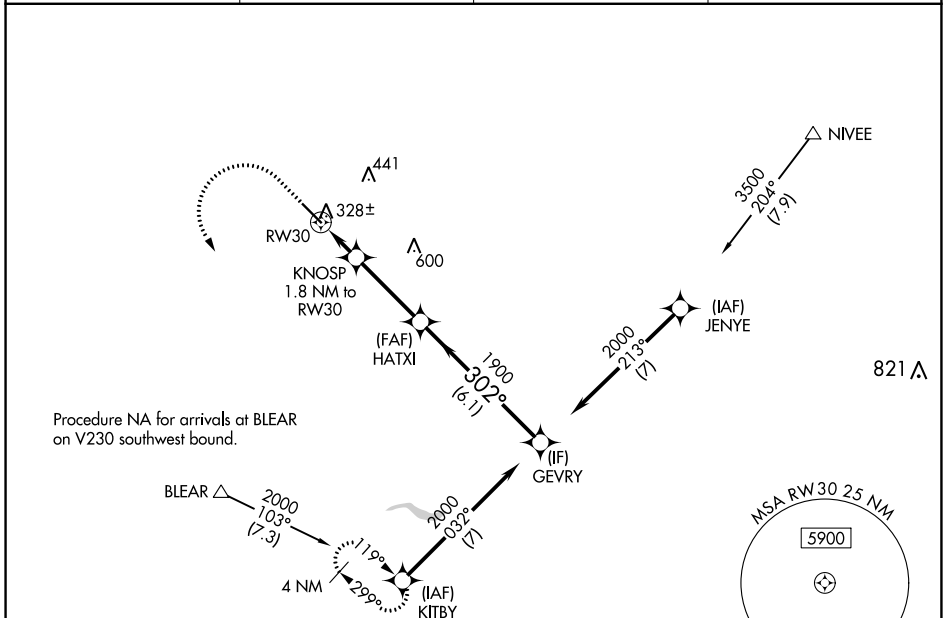
WAAS CH <b>90209</b> <b>W30A</b>	APP CRS <b>302°</b>	Rwy Idg TDZE <b>255</b> Apt Elev <b>255</b>	<b>5545</b> <b>255</b> <b>255</b>
--	------------------------	---	---

# RNAV (GPS) RWY 30

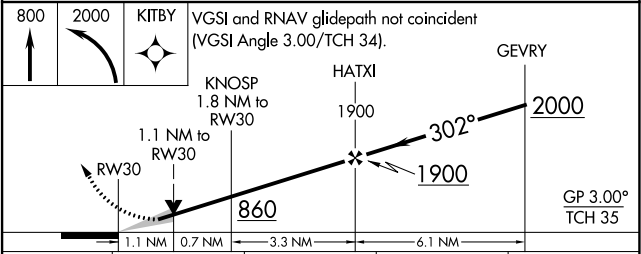
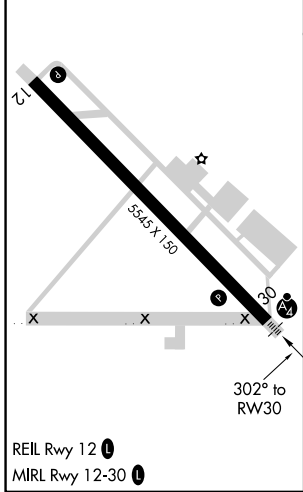
MADERA MUNI (M.A.E.)

RNP APCH - GPS.		MALSF 	MISSED APPROACH: Climb to 800 then climbing left turn to 2000 to KITBY and hold.
For uncompensated Baro-VNAV systems, LNAV/VNAV NA below -2°C or above 54°C. Inop table does not apply to LPV and LNAV/VNAV Cat A/B/C.			

ASOS <b>134.725</b>	FRESNO APP CON <b>119.45</b>	CINC DEL <b>119.45</b>	UNICOM <b>122.8 (CTAF) 0</b>
------------------------	---------------------------------	---------------------------	---------------------------------



ELEV 255	TDZE 255
----------	----------



CATEGORY	A	B	C	D
LPV DA	505-3/4 250 (300-3/4)			NA
LNAV/VNAV DA	505-3/4 250 (300-3/4)			NA
LNAV MDA	640-3/4	385 (400-3/4)	640-7/8 385 (400-7/8)	NA
CIRCLING	680-1 425 (500-1)	720-1 465 (500-1)	760-1 1/2 505 (600-1 1/2)	NA

SW-2, 31 OCT 2024 to 28 NOV 2024

SW-2, 31 OCT 2024 to 28 NOV 2024