

WAAS CH <b>99605</b> <b>W07A</b>	APP CRS <b>071°</b>	Rwy Idg TDZE Apt Elev	<b>5008</b> <b>5</b> <b>5</b>
--	------------------------	-----------------------------	-------------------------------------

# RNAV (GPS) RWY 7

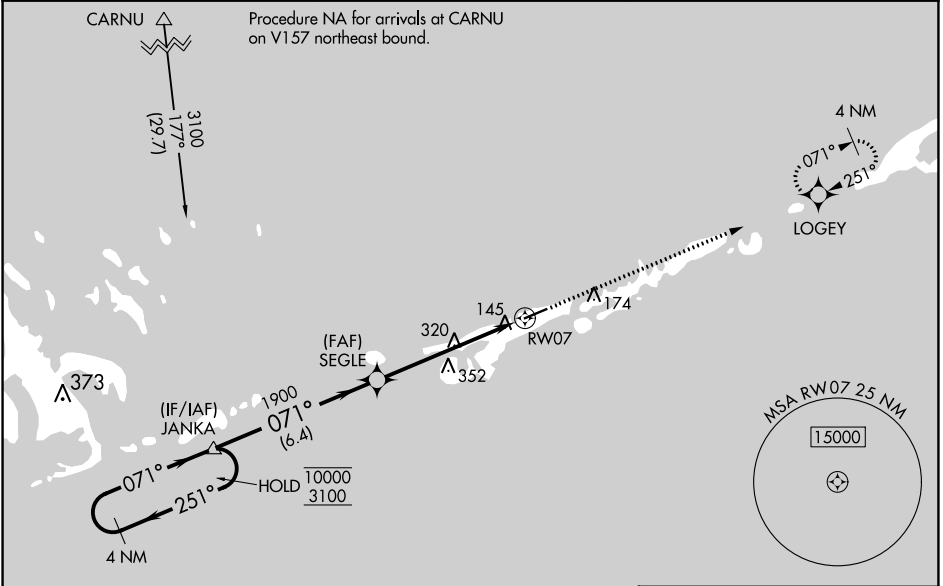
THE FLORIDA KEYS MARATHON INTL (MTH)

RNP APCH-GPS.

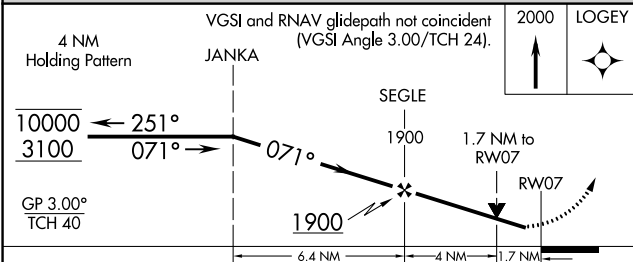
▼ Baro-VNAV and VDP NA when using Key West Intl altimeter setting. Rwy 7 helicopter visibility reduction below ¼ SM NA. For uncompensated Baro-VNAV systems, LNAV/VNAV NA below -15°C or above 54°C. When local altimeter setting not received, use Key West Intl altimeter setting: increase LPV DA to 482 feet, LNAV/VNAV DA to 534 feet, increase LPV and LNAV/VNAV all Cats visibility ¼ SM, increase all MDAs 100 feet and LNAV Cat C/D and Circling Cat C visibility ¼ SM and Circling Cat D ½ SM.

MISSED APPROACH: Climb to 2000 direct LOGEY and hold.

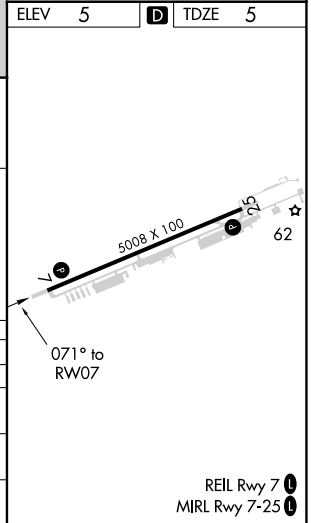
ASOS <b>135.525</b>	MIAMI CENTER <b>133.5 306.9</b>	UNICOM <b>122.975 (CTAF) 0</b>
------------------------	------------------------------------	-----------------------------------



ELEV	5	TDZE	5
------	---	------	---



CATEGORY	A	B	C	D
LPV DA		389-1 1/8	384 (400-1 1/8)	
LNAV/VNAV DA		441-1 1/4	436 (500-1 1/4)	
LNAV MDA	600-1	595 (600-1)	600-1 3/4	595 (600-1 3/4)
CIRCLING	600-1	595 (600-1)	620-1 3/4 615 (700-1 3/4)	660-2 655 (700-2)



SE-3, 08 AUG 2024 to 05 SEP 2024

SE-3, 08 AUG 2024 to 05 SEP 2024