

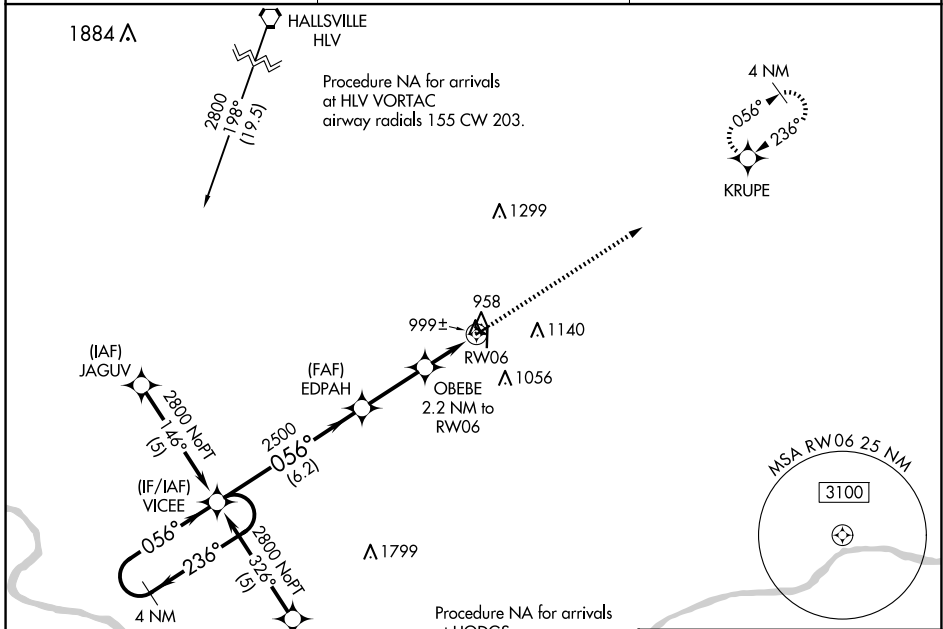
APP CRS	Rwy Idg	3203
056°	TDZE	882
	Apt Elev	887

RNAV (GPS) RWY 6

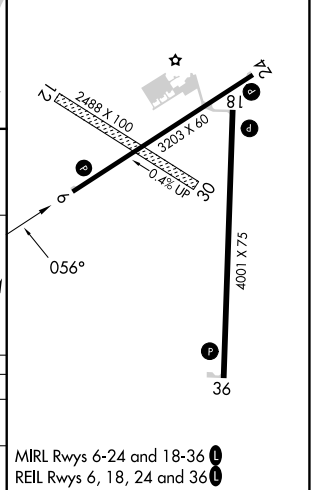
ELTON HENSLEY MEML (F'TT)

RNP APCH.	Use Columbia altimeter setting; when not received, use Jefferson City altimeter setting and increase all MDA 80 feet. Rwy 6 helicopter visibility reduction below 3/4 SM NA. Circling Rwy 18, 24 NA at night.	MISSED APPROACH: Climb to 2800 direct KRUPPE and hold.
▼ ▲ NA		

COU ASOS 128.45	MIZU APP CON 124.375 353.925	UNICOM 122.7 (CTAF) 1
---------------------------	--	---------------------------------



ELEV 887	TDZE 882
----------	----------



4 NM Holding Pattern	VGSIs and descent angles not coincident (VGSIs Angle 3.00/TCH 46).		2800	KRUPPE
VICEE	EDPAH	OBEBE 2.2 NM to RWY 06	2500	RWY 06
2800 ← 236°	→ 056°	3.04° TCH 40	1620	
6.2 NM		2.7 NM	2.2 NM	
CATEGORY	A	B	C	D
RNAV MDA	1300-1	418 (500-1)	1300-1 1/4 418 (500-1 1/4)	NA
CIRCLING	1380-1 493 (500-1)	1480-1 593 (600-1)	1560-2 673 (700-2)	NA

NC-3, 23 JAN 2025 to 20 FEB 2025

NC-3, 23 JAN 2025 to 20 FEB 2025