

APP CRS	Rwy Idg	<b>4001</b>
<b>001°</b>	TDZE	<b>881</b>
	Apt Elev	<b>887</b>

# RNAV (GPS) RWY 36

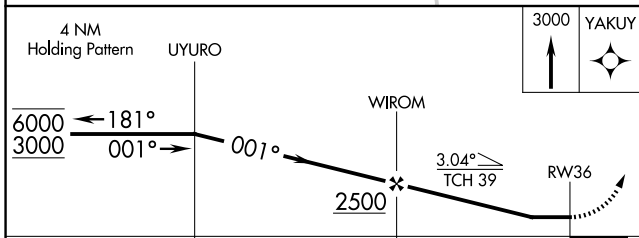
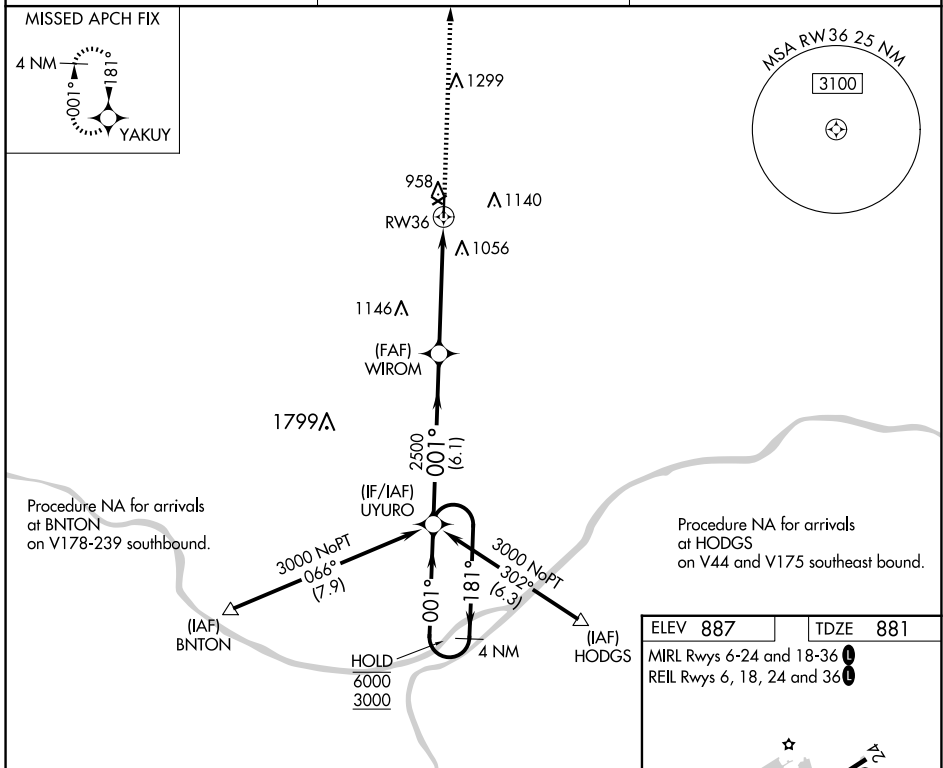
ELTON HENSLEY MEML (F'TT)

RNP APCH-GPS

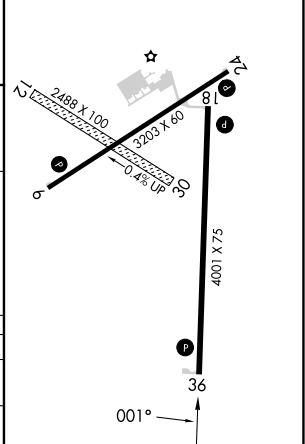
▼ NA Circling NA to Rws 12 and 30. Circling Rwy 18, 24 NA at night. Rwy 36 helicopter visibility reduction below ¼ SM NA. Use Columbia altimeter setting; when not received use Jefferson City altimeter setting and increase all MDA 100 feet. Increase LNAV Cat C visibility ¼ SM, and Circling Cat C visibility ¼ SM.

MISSED APPROACH: Climb to 3000 direct YAKUY and hold.

COU ASOS <b>128.45</b>	MIZZU APP CON <b>124.375 353.925</b>	UNICOM <b>122.7 (CTAF) 0</b>
---------------------------	---	---------------------------------



ELEV 887	TDZE 881
MIRL Rws 6-24 and 18-36	
REIL Rws 6, 18, 24 and 36	



CATEGORY	A	B	C	D
LNAV MDA	1280-1	399 (400-1)	1280-1 1/8 399 (400-1 1/8)	NA
<b>C</b> CIRCLING	1380-1 493 (500-1)	1480-1 593 (600-1)	1560-2 673 (700-2)	NA

NC-3, 23 JAN 2025 to 20 FEB 2025

NC-3, 23 JAN 2025 to 20 FEB 2025