

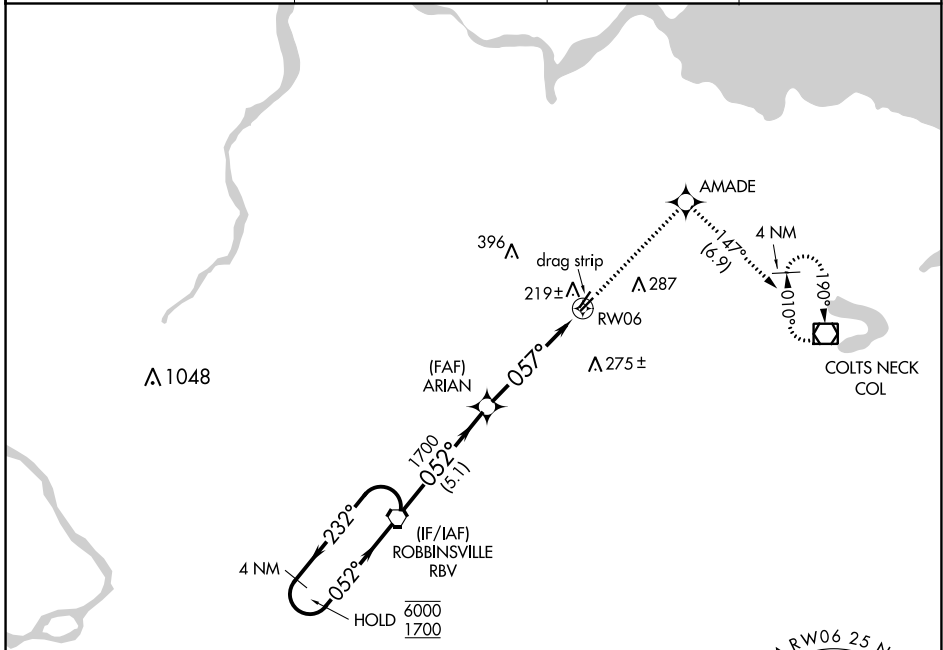
APP CRS	Rwy Idg	<b>2994</b>
<b>057°</b>	TDZE	<b>87</b>
	Apt Elev	<b>87</b>

# RNAV (GPS) RWY 6

OLD BRIDGE (3N6)

RNP APCH.	<p>Procedure NA at night. Rwy 6 helicopter visibility reduction below 1 SM NA.</p> <p>▲ NA Use Belmar/Farmingdale altimeter setting; when not received, use Wrightstown altimeter setting and increase all MDA 20 feet.</p>	<p>MISSED APPROACH: Climb to 2000 direct AMADE and on track 147° to COL VOR/DME and hold.</p>
-----------	---	---

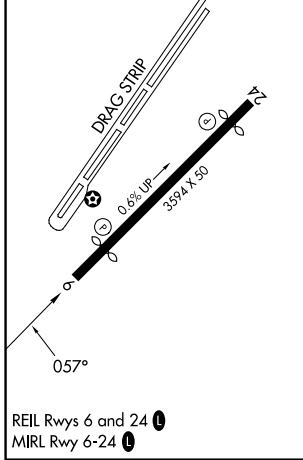
BLM AWOS-3PT <b>121.625</b>	MC GUIRE APP CON <b>126.475 363.8</b>	GCO <b>121.725</b>	UNICOM <b>123.075 (CTAF)</b>
--------------------------------	--	-----------------------	---------------------------------



NE-2, 03 OCT 2024 to 31 OCT 2024

NE-2, 03 OCT 2024 to 31 OCT 2024

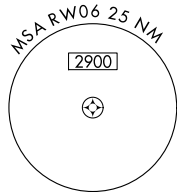
ELEV <b>87</b>	TDZE <b>87</b>
----------------	----------------



REIL Rwy 6 and 24

MIRL Rwy 6-24

NoPT for arrival on RBV VORTAC airway radials 238 CW 289.



Visual Segment - Obstacles.				2000	AMADE	tr 147°	COL
4 NM Holding Pattern							
RBV VORTAC				ARIAN		RWY 06	
6000	1700	← 232°	→ 052°	052°	1700	057°	
				5.1 NM		4.9 NM	
CATEGORY	A	B	C	D			
LNAV MDA	660-1 573 (600-1)		NA				