

CLARKSVILLE, TENNESSEE

RNAV (GPS) X RWY 23

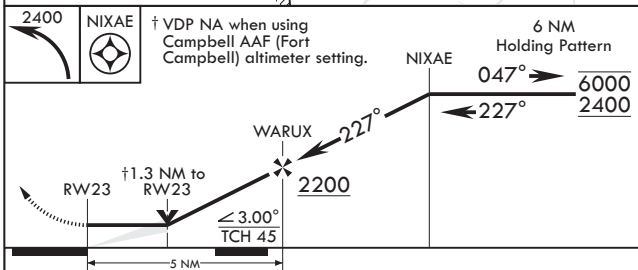
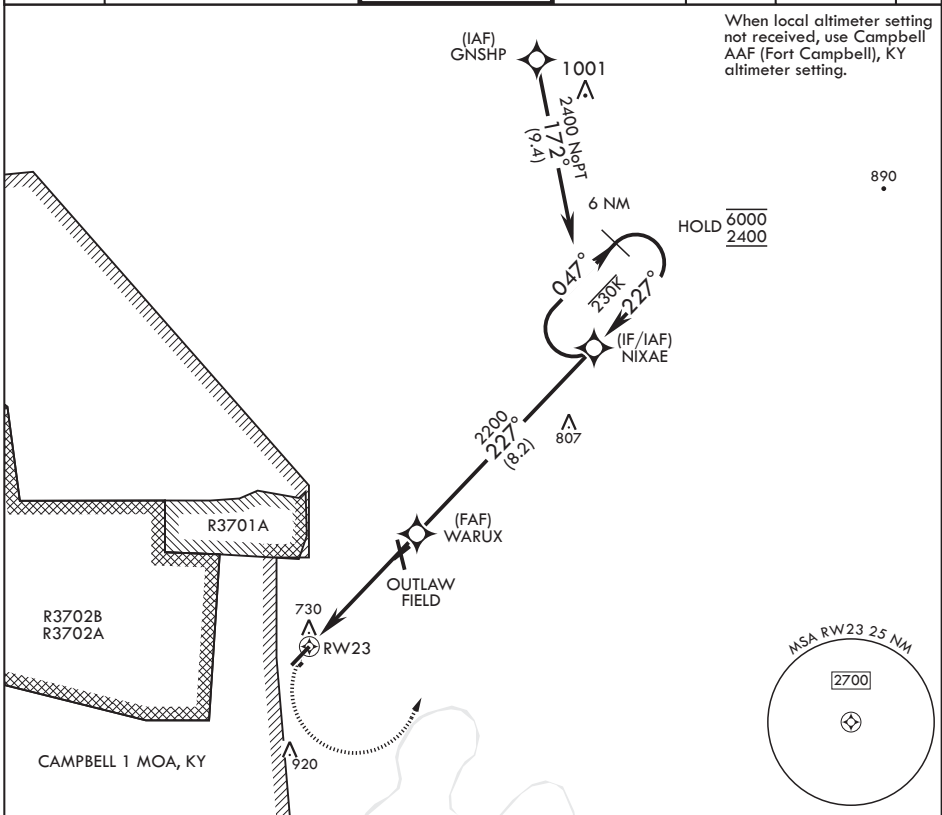
APCH CRS	Rwy Idg	5000
227°	TDZE	587
	Arprt Elev	595

AL-6373 (USA)

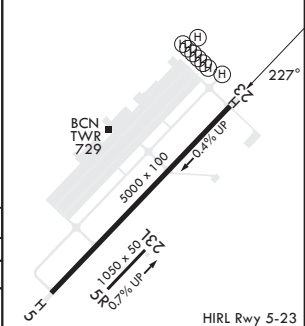
SABRE AAF (FORT CAMPBELL) (KEOD)

RNP APCH-GPS	MISSED APPROACH: Climbing left turn to 2400 direct NIXAE and hold.
RADAR required	
* Circling not authorized to Rwy 5R/23L.	

SABRE ATIS	CAMPBELL APP CON/DEP CON	TOWER *	GND CON	CLNC DEL	EAGLE RADIO	ASR
306.5	134.35 307.025	124.675 (CTAF) 290.45	142.975 267.3	237.6	285.7	



ELEV 595	TDZE 587
----------	----------



CATEGORY	A	B	C	D
LNAV MDA	1060-1 473 (500-1)		1060-1 $\frac{3}{8}$ 473 (500-1 $\frac{3}{8}$)	
CIRCLING*	1160-1 565 (600-1)	1240-1 645 (700-1)	1300-2 705 (800-2)	1300-2 $\frac{1}{4}$ 705 (800-2 $\frac{1}{4}$)

CLARKSVILLE, TENNESSEE

36°34'N - 87°29'W

SABRE AAF (FORT CAMPBELL) (KEOD)

Amdt 1 07SEP23

RNAV (GPS) X RWY 23

SE-1, 31 OCT 2024 to 28 NOV 2024

SE-1, 31 OCT 2024 to 28 NOV 2024