

CLARKSVILLE, TENNESSEE

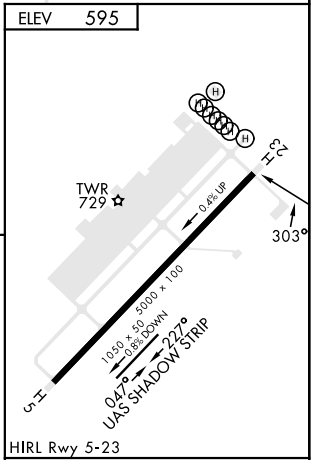
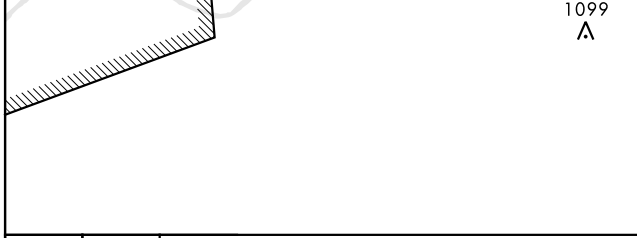
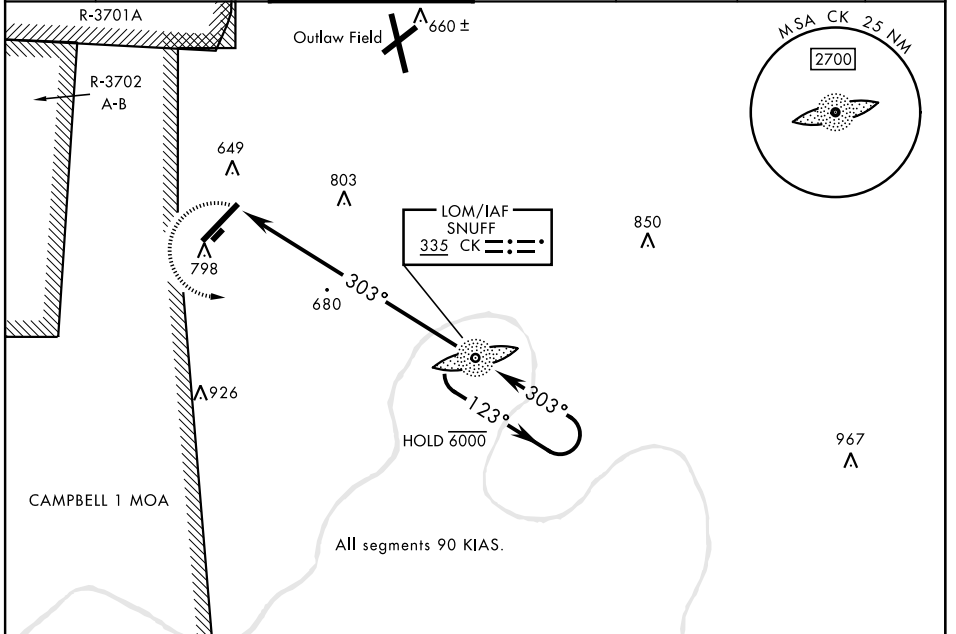
23250

# COPTER NDB 303°

LOM CK <b>335</b>	APCH CRS <b>303°</b>	Rwy Idg TDZE Arprt Elev <b>N/A</b> <b>N/A</b> <b>595</b>	AL-6373 [USA]	SABRE AAF (FORT CAMPBELL) (KEOD)
----------------------	-------------------------	---	---------------	----------------------------------

RADAR required (for procedure entry)		MISSED APPROACH: Climbing left turn to 2200 direct CK LOM and hold.			
When local altimeter setting not received, use Fort Campbell, KY altimeter setting.					

ATIS <b>306.5</b>	CAMPBELL APP CON <b>134.35 307.025</b>	TOWER ★ <b>124.675</b> (CTAF) <b>290.45</b>	GND CON <b>142.975 267.3</b>	CLNC DEL <b>237.6</b>	EAGLE RADIO <b>285.7</b>	ASR
----------------------	---	--	---------------------------------	--------------------------	-----------------------------	-----



2200	CK	One Minute Holding Pattern
LOM 123° → 2200 ← 303°		
HIRL Rwy 5-23 FAF to MAP 5.1 NM		

CATEGORY	COPTER					
H-303°	1080-½	485	(500-½)			
	Knots	45	60	75	90	105
	Min:Sec	6:48	5:06	4:05	3:24	2:55

CLARKSVILLE, TENNESSEE 36°34'N-87°29'W SABRE AAF (FORT CAMPBELL) (KEOD)

Amdt 6B 20JUN19

# COPTER NDB 303°

SE-1, 31 OCT 2024 to 28 NOV 2024

SE-1, 31 OCT 2024 to 28 NOV 2024